

Contents

Title	Author	Page
Articles		
Book Review	Dylan Steed	26
Cambridgeshire Open Studios	Jo Riches	5
Coots, Mutes and Hoots	Gareth Davies	12
Devil's Dyke Morris Men	Nigel Strudwick	10
Have your say on the future of Reach	East Cambs District Council	35
Horsy Clip Clops		16
Maisie Whitehead	Jan Robinson	8
Meeting Gareth Davies	Claire Halpin-McDonald	20
Plants and Ploughmans	Pam King	10
Reach Fair		3
Poem about Reach Village	Dennis Millard	11
Royal Wedding Garden Party	Jo Riches	9
Washing a Pony's Tail	Jodie Halpin-McDonald	28
Wine Tasting	Ross Clark	11
Bus Timetable		42
Church		
CentrePeace	Pat Chalmers	40
Church News	Pat Chalmers	40
Church Services		41
Pastoral Letter	Eleanor Williams	39
Welcome to Eleanor	Zenida McDonald	39
Contact Information		44
Cookery (Rita's Recipes)	Rita Dunnett	29
Crossword	Zenida McDonald	30
Days Gone By	David Parr	21
Diary Dates		43
Editorial	Claire Halpin-McDonald	2
Fen Chitchat	Lesley Boyle	16
Kids Page	Susie Tucker	27
Little Windmills	Susan Bluck	25
Mothers' Union	Zenida McDonald	19
Parish Council		
Know Your Parish Council		24
A Message from your District Councillor	Allen Alderson	39
Parish Council Meeting Draft Minutes		36

Title	Author	Page
Plants and Planting		
Chelsea Chop	Janet Hall	15
News from the Allotments	David Thomas	13
Ross's Reflections	Ross Clark	24
Snakehall Farm	Maz Baker	17
Sport and Recreation		
Bellringing	Lesley Boyle	31
Cricket Report	Ross Clark	31
Sports News	Juliet Vickery	32
Swaffham Prior Primary School	Diane Hawkes	25
Wicken Fen News	Howard Cooper	18
Women's Institute	Zenida McDonald and Avis Brown	19

CHURCH BARBECUE

SATURDAY 16TH JULY 2011
FROM 6.00PM

On the Village Green (Village Centre if wet)

£6/adult
£3/child (6yrs and under)
£20 for a family of 4

Admittance strictly tickets only
Beware - numbers are limited
Tickets from Zenida McDonald (742029)
or Jon Cane (741064)

BBQ burgers, sausages and rolls are provided and also soft drinks. You may wish to bring your own alcoholic drinks and glasses.

From the Editor

With the Royal Wedding Garden Party and Reach Fair occurring in such quick succession the excitement was difficult to contain. Well done to everyone that helped and joined in. We hope you like our souvenir pull outs with this issue.



Exciting also was the fact that *Within Reach* won gold within its category at the Community Magazine Awards and we received a cheque for £500.

In July we look forward to another Wine Tasting (9th), Church BBQ (16th) and Cambridgeshire Open Studios.

In this issue David Thomas describes a huge variety of plants to consider as the prolonged dry spell continues and Janet Hall is chopping things down in the garden which I thought was only done in the autumn. Lesley Boyle is having a giggle. The people at Snakehall Farm have gone mad and Wicken Fen is wet and windy. It looks as though the 24 acres of county council owned land will be purchased by the National Trust which has caused my excitement levels to rise all over again.

We meet the sheepish (p.20) and snoozy (p.12) Gareth Davies in this issue. And in *Days Gone By* by David Parr we learn about a special exhibition organised by Maisie Whitehead in 1978.

Dylan Steed has written a brilliant book review and Susie Tucker has lots of riddles. Rita has two rhubarb recipes for us to try which is great because I bought some rhubarb at the Plants and Ploughmans event.

Ross Clark is a little annoyed at officialdom in his *Reflections* but the Cricket Report contains some highlights. Juliet Vickery continues to wow us with her exposé of sporting greats in Reach.

Enjoy this issue and make sure you take advantage of ECDC's offer to have your say on the future of Reach (P.35). Sounds important!

Claire Halpin-McDonald
01638 743330
claire.halpin@ascontracts.co.uk

Cover photographs, Garden Party and Reach Fair Souvenirs: Hugh de Lacy, Alison Lewis & David Parr. Cover picture is of Hazel Lingley as Boudicca.

**Gold Award Winner at the
Community Magazine Awards 2010**

Editor's Notes

The purpose of *Within Reach* is to serve the whole village by circulating information and interesting articles free to every household in Reach. Additional copies are available at a charge of £2.50. Issues are published bi-monthly which cover the dates of Dec/Jan, Feb/Mar, Apr/May, June/July, Aug/Sept and Oct/Nov.

Copies of the Minutes of Parish Council meetings and of *Out of Reach* and *Within Reach* magazines can be found on the village website at **www.reach-village.co.uk**.

The next copy date is 15th July 2011. This magazine is approved and printed by Reach Parish Council.

Editorial Team

Editor	Claire Halpin-McDonald
Production	Claire Halpin-McDonald
Advertising/Treasurer	David Parr
Distribution	Freda Lloyd Joyce Harrison
Roving Reporter	Jo Riches
Roving Photographer	Hugh de Lacy
Allotments	David Thomas
Bellringing	Lesley Boyle
Cookery	Rita Dunnett
Cricket	Ross Clark
Crossword	Zenida McDonald
Days Gone By	David Parr
Fen Chitchat	Lesley Boyle
Kids Page	Susie Tucker David Cane
Little Windmills	Susan Bluck
Mothers' Union	Zenida McDonald
Parish Council	David Parr
Plants	Janet Hall
Snakehall Farm	Maz Baker
Sport	Juliet Vickery
Swaffham Prior School	Diane Hawkes
Wicken Fen	Howard Cooper
Wildlife	Joss Goodchild Alison Lewis
Women's Institute	Zenida McDonald

Reach Fair 2011

Fair Quiz

The Fair Quiz, held on Sunday evening before this year's Fair, was won by "Our Martin's Team" (Dyke's End team) and the money collected, £84 in all, has been sent to Macmillan Cancer Support as per their request.

Macmillan Cancer Support Say: Thanks a million

Thank you so much for your kind donation of £84 to Macmillan Cancer Support. Because of supporters like you, we can continue to improve the lives of people affected by cancer and their families.

2011 is a big year for us as it's our centenary year. This is a chance for us to look back at what we have achieved over the last 100 years, but more importantly, to look ahead to the next 100. We have set ourselves some big goals for the years to come and with your help we will be working harder than ever to reach people affected by cancer. If you would like to find out more about the services your donations will help to support or other ways you can get involved, please visit www.macmillan.org.uk.

We wouldn't be able to provide our vital services without your help.

Many thanks again for your valuable support.

Best wishes

Jenny Crean

Supporter Services department

Mark Towriss Busary Fund says:

Dear Reach Village Centre

Many thanks to you all. Reach Fair was a great way to launch our Mark Towriss Bursary Fund Quilt Raffle. The sun was shining, there was a great crowd and we made £500, despite the school raffle 20 yards away. We were made to feel most welcome and there was interest in the Bursary Fund so - thank you! Out of our 7,000 raffle tickets we have less than half left - we hope to have none left by the 18th June and to have raised £7,000 towards training another GP.

With gratitude and best wishes

Ute Towriss

www.marktowrissbursary.com

Fancy Dress Results

Up to 5 year olds

Name	Age	Address	Character
1 st Tobias Aspin	5	Reach	King Charles 1
2 nd Edie	4	Cambridge	A Queen
3 rd Matilda	18 months	Burwell	A Queen

6 - 9 year olds

Name	Age	Address	Character
1 st Hazel Lingley	7	Reach	Boudicca
2 nd Henry Aspin	6	Reach	Henry VIII



THE TASTES OF WINE

A TUTORED WINE TASTING WILL BE HELD IN THE VILLAGE CENTRE ON SATURDAY 9TH JULY 2011 AT 7.30PM

TICKETS £15 PER PERSON TO INCLUDE 8 WINES FOR TASTING PLUS BREAD AND CHEESE ANY PROFITS WILL GO TO THE CHURCH

TO BOOK A PLACE CONTACT HUGH DE LACY, 21 GREAT LANE TEL 743839 OR 07752 331379 EMAIL [HDELACY@REACH-VILLAGE.CO.UK](mailto:hdelacy@reach-village.co.uk)

Finances of the 2011 Reach Fair

Commercial Stalls	2011	2010		Village Stalls	2011	2010
Perrett - Fair	£1,510.00	£1,430.00		Car Park/Programmes	£3,208.74	£3,360.25
Bar	£750.00	£750.00		Tea Tent	£824.62	£858.78
Food	£1,750.00	£1,900.00		BBQ	£1,195.00	£750.00
Craft	£470.00	£810.00		Bottle Stall	£98.06	£320.00
Residents	£285.00	£269.00		Cake Stall	£222.60	£185.30
Entertainment	£400.00	£300.00		Salad Stall	£524.72	£509.42
Information	£100.00	£210.00		Coconuts	£165.00	£188.56
				Cream Teas	£680.09	£541.20
				Football	£161.50	£122.00
				Village Games	£183.39	£450.23
				Programme Adverts	£875.00	£850.00
Figures in bold and italics are estimates				Total	£8,138.72	£8,135.74
				Expenses	2011	2010
				Traction Engine	£60.00	£60.00
				Grass Cutting	£10.00	£10.00
				St John Ambulance	£204.00	£238.52
				General Expenses	£45.00	£106.62
				Car Park	£1,000.00	£1,800.00
				Parking (ATC)	£268.00	£289.78
				Venture Scouts	£0.00	£0.00
				PA System	£420.00	£411.25
				Puppets/Magic Show	£200.00	£200.00
				Patchwork Circus	£210.00	£210.00
				Advertising	£37.68	£21.38
				Latta Loo Hire	£750.00	£646.25
				Policing	£450.00	£444.98
				Traffic Management	£1,200.00	£1,116.25
				Straw Bales	£188.00	£151.20
				Raptors	£150.00	£95.00
				Village Games/Prizes	£0.00	£0.00
				Banners	£0.00	£76.38
				Programmes	£1,600.80	£1,175.00
				Art Competition Prizes	£5.00	£20.00
				Draw Prizes	£200.00	£225.00
Total	£5,265.00	£5,669.00		Total	£6,998.48	£7,297.61
Summary						
Commercial Stalls	£5,265.00	£5,669.00				
Village Stalls	£8,138.72	£8,135.74				
Total Income	£13,403.72	£13,804.74				
Expenses	£6,998.48	£7,297.61		To the Village Hall	£4,803.93	£4,880.35
Profit	£6,405.24	£6,507.13		To the Amenity Fund	£1,601.31	£1,626.78

Cambridgeshire Open Studios

Local Artists Worth a Visit



**Cambridge Open Studios
Open Saturdays and Sundays 11am-6pm**

**Weekend 1: 2nd/3rd July
Weekend 2: 9th/10th July
Weekend 3: 16th/17th July
Weekend 4: 23/24th July**

If you've never visited an Open Studio, perhaps start by visiting the talent on your doorstep and you'll be delighted by what's on offer. Keep an eye out for the yellow flags flying throughout the region to indicate an exhibiting Cambridge Open Studio!

Cambridge Open Studios exist for the purposes of promoting the making of original works of art and craft and to provide an opportunity for the public to become involved in the arts by meeting artists in their studios, seeing their work and how it is produced. Now in its 37th year, we have more members than ever before with around 240 participating and welcoming the public into their studios. There are many studios open in Cambridge as well as surrounding towns and villages.

Visit the website for a full list of exhibiting artists:
www.camopenstudios.co.uk

Your Local Mini Guide, Meet the Local Artists

Your local exhibiting Cambridge Open Studios members are listed with their 'open' weekends. Please note, not all artists are open for the full four weekends!

**Gold Award Winner at the
Community Magazine Awards 2010**

Reach:

Emma Mitchell - Jeweller

Address: Greenview Cottage, 31 Fair Green, Reach
CB25 0JD, 01638 741063, emma@minniedog.co.uk
www.emmamitchelldesigns.co.uk

Open weekends: 2 and 4 in July



Emma's nature-inspired designs are hand-worked in silver, enamel and gemstones. Blossom, hares, birds and structural plant forms all play a big part in her collection, many of the pieces produced in her beach-hut style studio.



Emma has been chosen to be part of a virtual artisan fair run by the blog poppytalk.blogspot.com. Poppytalk is one of the top ten design blogs worldwide and encourages the handmade movement by promoting up-and-coming design talent.

Emma has also very recently been approached by Kirstie Allsop's team to contribute a jewellery-making project to a crafting handbook to accompany her new television series to be screened in the autumn. Emma also runs jewellery-making workshops teaching beginners and those with some experience to make jewellery from tiny vintage objects, silver clay and beautiful gemstone beads.

Swaffham Prior:

Paul Abbott - Oil Painter

Address: The Mill House, 11 Mill Hill, Swaffham Prior, Cambridge, CB25 0JZ, 01638 741537
paul@vividicity.com www.vividicity.com

Weekends: 1, 2 and 3, working studio



Bright, happy paintings from a vivid palette. Beaches, huts and rural views reflecting the local and east coast landscape.



Paul grew up in the East Midlands and has spent most of his adult life in the East of England from Newcastle through Hull to Norwich and now to Cambridge pursuing a career in engineering. However his painting has been gathering momentum over a decade or more and he is now an established and successful Cambridge Open Studios participant.

Inspiration for his work comes from the familiar rural landscapes of East Anglia and the beaches and huts of the Norfolk and Suffolk coastline, albeit sometimes embellished with a hint of the colours and warmth of the Indian Ocean. Compositions are usually simple and owe much to a long held love of photography, though he eschews detail in preference for a graphic style expressed through the loose and heavy application of paint with a palette knife. Paul tries to capture simultaneously both the form of a subject and the spirit of the moment, though he is quick to point out that each work soon takes on a life of its own from the first 'happy accident' onward. He paints from a vivid palette of colours straight from the tube with a disregard for the browns and greys of everyday life in preferring purple, crimson and yellow and is proud to still have his first tube of burnt umber kept only for emergencies.

For Open Studios, Paul puts on an eclectic display of work from hand framed miniatures to substantial colourful canvases with a view to having for sale something to suit every pocket. In the meantime, he is busy creating fresh pieces remaining true to his core aesthetic values but with an ambition to loosen and reduce the content to its very essence.

Swaffham Prior:

Tina Jost – Mixed Media, Pen & Ink

Address: The White House, 32 Lower End, Swaffham Prior, CB25 0HT

Open weekends: 1 and 3 in July



Tina is passionate in exploring textures using oils and rich colours in paintings. She encourages people to reach out and touch the textures they visualise whilst painting and then capture it onto canvas.



To look through a magnifying glass at pen and ink drawings and then to capture the texture with the naked eye can take your breath away. . . .

To enjoy art in itself is to enjoy all the beauty that life has to offer.

VILLAGE CENTRE 100 CLUB

To help raise money to run the Village Centre we have a 100 Club. Tickets are just £10 for a full year.

We have 10 draws a year.

Eight draws of £20 on the third Wednesday of the month and two draws of £50 in July and December.

RECENT 100 CLUB WINNER

May - Sue Briscoe £20

Please contact Joyce Harrison (742405) to be part of this year's draw

Fordham:

Paul Janssens - Painting, Drawing & Collage

Address: 3 River Lane, Fordham, Ely, CB7 5PF
01638 723958
pauljanssens1963@yahoo.co.uk
www.pauljanssens.co.uk

Weekends: 1, 2, 3 and 4



Paintings and drawings from travels and local environment using oils and sgraffito, watercolour and pen. Near Fordham market, off the A142.



Paul was born in London in 1963, where he lived until his mid twenties. He graduated from Chelsea School of Art in 1985. He found London was a great place to grow up and study, with so much on his doorstep. London, being such a culturally rich city, fuelled his passions for art and travel.

Since leaving London, he has combined both of these, recording his travels through sketch books and paintings. The sketch books have proved a valuable source of material and have enabled him to work on large scale pieces in his studio.

Moving to New Zealand to teach gave Paul and his wife a great opportunity to explore the country. From New Zealand they travelled to Australia and Malaysia gathering material and working on his sketch books.

After returning to the UK they decided to move to Portugal, where they explored the Iberian peninsula with its rich history, architecture and landscape. Other destinations have included Italy, Turkey and France. In 2000 they returned to the UK with their young family and now live in East Anglia.

Closer to home Paul has been exploring the unique natural features and aspects of the Fens and coastline, with the ever changing light and constant movement of the skies and coast. The Fens and reed beds provide an almost abstract quality with rhythmic lines and rich textures. The coasts of Ireland and Britain also prove challenging, unpredictable and full of energy.

Whilst travelling, Paul has exhibited in New Zealand and Portugal. In the UK he has exhibited in London, Edinburgh, Manchester, Cambridge and Ely.

In 2007 Paul exhibited a large collection of drawings and paintings in the "Casting Light" exhibition at the Museum of Classical Archaeology, Cambridge, on the theme of ancient Rome. He has participated in the Cambridge Open Studios since 2003 and has also run art workshops for adults and children. Paul is very happy to undertake commissions. You are welcome to contact Paul for more information about his work or to arrange a visit to his studio.

There are also artists exhibiting in Swaffham Bulbeck, Lode and Bottisham, please check the website for full listings - www.camopenstudios.co.uk.

Lode:

Matthew Blakely – Potter

Address: 9 Abbey Lane, Lode, CB25 9EP
Open weekends: 1 and 2 in July

Bottisham (Joint Exhibition):

Heidi Lichterman – Weaver of Silk and Wire

Claire Howieson – Jeweller and Silversmith

Address: The Old Courthouse, 123 High Street, Bottisham, Cambridge, CB25 9BA

Open weekends: 2 and 3 in July

Please check the website for more information on exhibiting artists in the surrounding area.

Jo Riches

**Gold Award Winner at the
Community Magazine Awards 2010**

Maisie Whitehead

Heartfelt congratulations go to Miss Maisie Whitehead for receiving The Long Service Award for Music, for her work at St. Etheldreda's church. She received a certificate signed by Bishop David together with a beautiful commemorative medal.



The award, which was a total surprise to her, was presented in person by the Archdeacon at her home.



Joyce Harrison read that presentations were being made to those who had given 50 years of musical service to the church and she alerted the diocese.

Miss Whitehead had been organist at St. Etheldreda's for well over 50 years. She occasionally helped out at St. Mary's Swaffham Prior too, in the days when the two churches worked as one parish with one vicar.

Her contribution over the decades has been amazing and this award is most certainly well deserved.

Jan Robinson

A Right Royal Do!

Although a little cooler than it had been, Friday 29th April was a delightful sunny spring day. Hundreds of people, over 300 so I understand, came to enjoy the royal wedding garden party celebrations on the village green.



Fortunately for us, Kate and William couldn't have planned to have their wedding on a better day. The fair ground offered unlimited free rides during a few hours of the celebration, something all the children and certainly many of the adults enjoyed. The view from the big wheel was as always breathtaking, affording a short glimpse into the pretty village gardens one perhaps doesn't normally get to see. The helter skelter, another big favourite for the day, whizzing round and round, something surely only the youngsters can appreciate!



But what to eat: a traditional afternoon tea with a fine array of sandwiches, cakes and biscuits or the efforts of Team BBQ? I have to confess I enjoyed a little of both and some would say not that little! Music by Hannah Horton Jazz Trio was delightful. I noticed a huddle of children enjoying their afternoon tea whilst sat in the prime location of the music tent. Was it the music or the pink hair that delighted them most?

A super end to the day, the royal line up! I particularly enjoyed William's enthusiasm whilst shaking hands, the bemused faces of the children was a sight to see. What was going on! But then all became clear when each child was presented a commemorative mug, a nice touch. I'm sure a good few cups of tea will be enjoyed whilst thinking back to this lovely village day.

**Gold Award Winner at the
Community Magazine Awards 2010**



The total cost of the garden party including the food, drink, music and bunting was £1,025. Income from visitor donations was £395 so there was a net cost of £630. Swaffham Prior Parochial Charities very kindly gave us £300 towards the event and the Amenity Fund will provide the remaining £330.

The raffle was very successful raising £258 for the Amenity Fund. Grateful thanks go to Mandy and Sean Manchett for their generosity.

The mugs have sold well but with a few left over, other villagers might like to purchase one. Please get in touch with David Parr via email davidmparr@btinternet.com or call him on 744081.

Another event that will be looked back on with super memories as we all celebrated in style. Our many thanks go to all the organisers that really did make it a day to remember! The members of the Garden Party Committee were: Sue Bailey, Karen Carpenter, Claire Halpin-McDonald, Jo Mules, Helen Oliver, David Parr and Clare Snaith. Lanes Bakery of Burwell prepared the traditional afternoon tea and Hurrells provided the excellent burgers.

Jo Riches

Plants and Ploughmans



The Plant Sale at Reach Village Centre on the 16th April was very successful. Many people stayed for the Ploughman's lunch and chose from several varieties of delicious soup. My grateful thanks to Emma Mitchell for the idea. It proved to be a great day and £580 was raised towards our church funds here in Reach. But the day could not have happened without our team of helpers: Joyce Harrison managing the kitchen, Marie and Hugh De Lacy keeping the soups flowing and Joss and Martin Goodchild's sterling work on the plant stall - with their good humour they could have sold anything with great expertise. Zenida McDonald and Janet helped with the raffle and Sue Bailey and others kept things going so well. Thanks to all who helped and to those who provided the lunch, soups and raffle prizes. But of course, the day was about plants and so many of you provided plants to sell on the day combined with the generosity of Prospects Farm Trust at Snakehall Farm. Just thank you to everyone.

Pam King



**Gold Award Winner at the
Community Magazine Awards 2010**

Devil's Dyke Morris Men

The Devil's Dyke Morris Men will be dancing at the Dykes End in Reach on Thursday 9th June 2011 at 7.45pm. We would be delighted to see as many villagers there as possible to support this ancient English tradition.

The Devil's Dyke Morris Men have been entertaining people in and around the Newmarket and Cambridge area since 1981. They take their name from the Devil's Dyke, an impressive earthwork which stretches seven miles from Woodditton to Reach. It was built in the Dark Ages, during the 6th or 7th century, to keep out marauding Mercians.



More information is contained on our web site:
www.devilsdykemm.org.uk

This year our chosen charity is Cambridgeshire Headway (www.headway-cambs.org.uk), supporting those with brain injuries.

**Nigel Strudwick
Bagman**

Burwell WI Open Meeting
Gardiner Memorial Hall, Burwell
Thursday 30th June
7.15pm for 7.30pm

Speaker: Gail Stuart
Life with My Father, Eric Morecambe

Wine Tasting



On the April 7th two dozen villagers spent a very enjoyable evening at the Village Centre sniffing petrol. Well, not actually petrol but its nearest chemical equivalent: Petaluma Riesling Hanlin Hill 2008. We had been warned by our host, Hugh de Lacy, but nevertheless it still came as a shock, even by Australian viticultural standards, that anyone could produce a wine which rolled off the tongue quite so much like a gallon of premium unleaded. And if we thought it was a bit aromatic now, just try laying it down. "The petrol taste does really come out after a couple of years," Hugh told us.



Other wines served up by Hugh turned out to be rather more popular. Besides having such a mouthful of a name that you find yourself reaching for the spittoon halfway through pronouncing it, the Altos de Tamarón Crianza 2006 Pagos del Ray Robera del Duero proved to have a good body and a pleasant after-taste – until to our horror we realised it came from Asda. Why pay more, indeed. The Carmenere 2009 also went down a treat, I think – although it was all getting a bit hazy by that stage of the evening.

Most popular of the whites, I think, was Chardonnay Woodbridge 2009, a Californian number which came via Sainsburys. Chardonnayish, might have been a better term, however one of the things we learned

**Gold Award Winner at the
Community Magazine Awards 2010**

was that the Americans aren't too fussy about what they plant where and as a result many wines are in fact a blend. It sounds a bit like my allotment.

Hugh turned out to be a very knowledgeable host, failing only when asked how many miles to the gallon you could get out of a Mondeo when powered by the Riesling. But then it was all a bit academic since, at £10 a bottle, the Riesling is even more expensive than genuine fuel.

Hugh has kindly offered to organise another wine-tasting evening on Saturday 9th July, when we are promised another eclectic range of bottles.

Ross Clark

Reach Village



*Once known as the Kingdom of Reach
It had a lot to offer each
Long time ago it was a thriving port
Where all the goods on the waterway were brought
The stone which anchored the ships remains still
Was seven churches one of which is known as Churchill
Five pubs, a shop, post office, chapel, and school
Today we only have a church, pub, and village hall
Fishman came, baker, grocer, butcher, oilman, once a
week
Your custom they were hoping to seek
We had a self appointed king his name was Len
Who could tell you a joke now and then
He was a very clever person you see
Because he worked for the university
But when King Len passed away
Reach is a very quiet place today
There are swings and things for little ones to play
Sports field for the older ones to pass the time away
Nothing else I can really say.*

Dennis Millard - born 21st November 1942

Coots, Mutes and Hoots

Twitching always seems a most inappropriate term for bird watching. I find the suggestion of constant movement and uncontrollable tics completely at odds with my preferred approach of finding a quiet and comfortable spot, moving as little as possible and letting the birds come to me. And since the National Trust built the bird hide by the mere on Tubney Fen I've found the ideal spot for my more relaxed approach – more snooze than twitch.

For the last two years I have been a regular snoozer, even in the teeth of the bitter easterlies that breeze through the glass-free windows. I manage to wake just long enough to keep a record of what I see. So I can tell you that in May last year, in six visits, I recorded some 40 different species, more than 10% of the total number of 'British' birds. This year looks set for a similar number, though there are some significant differences.

In 2010 you would have seen three pairs of avocets nesting and raising 11 chicks (though only three or four successfully). A pair of avocets has visited briefly this year but unfortunately did not stay to nest.

A year ago you would have had to queue to get into the hide in early May as the mere was visited by three Temminck's Stints - quite unusual small and rather dull, but rare, waders. The twitchers turned up in force and collected their controllable ticks, before roaring off to find the red-rumped swallow somewhere in Peterborough. Tick. A week later they were all gone and so were the stints.

I stayed where I was and enjoyed the more sedate pleasure of watching the other summer visitors – the dazzling yellow wagtails and the cuckoo seeking out a suitable reed warbler nest for its egg. A whinchat passed through on its journey north. The coots squabbled, the mute swans swanned majestically, and the barn owl and short-eared owls failed to hoot (that's tawny owls, so the title is poetic license).

However enough of May. By the time this is published it will be June, so if you take a trip to Tubney what might you see? Well I can almost guarantee that you will see coots, moorhens, little grebes (small and very noisy), swans, the inevitable Canada geese and a range of other waterfowl including mallards, shovelers, gadwall and tufted ducks. They are the residents. You can also hardly fail to see and hear the chorus of skylarks as you walk from the gate to the hide, often interspersed with the zooming flight of swallows (red-rumpless) and swifts.

Then there are those anonymous small birds that whizz around and are so difficult to identify that 'birders' call them LBJs – Little Brown Jobs. If you see one it could be almost anything but the most common around the mere are linnets and meadow pipits.



If you are lucky, or spend enough time there, you may see a variety of waders passing through including dunlin, redshank, oystercatchers, curlew and whimbrel. Little egrets with their white plumes and bright yellow feet are increasingly regular visitors. Streamer tailed, the common terns occasionally investigate the food possibilities of the water. And if the lapwings take off and start mobbing a bird of prey, you probably have a marsh harrier in your sights.

However stay until July and you may see my favourite bird. As the dragonflies appear the hobby puts in an appearance. If you are very lucky it will treat you to a flying master-class as it both catches and eats its insect prey while on the wing.

And if you do visit and find someone snoozing gently in the corner of the hide, please feel free to wake me, particularly if I am showing any signs of twitching in my sleep.

Gareth Davies

Amenity Fund

**Let us have your ideas as to
how it should be spent**

Ross Clark (Chair) 743725

News from the Allotments: Growing Vegetables in a Drought

I've heard it said that 'God made rainy days, so gardeners could get the housework done'. Well if that's the case there must be some very dusty houses in Reach. According to the rain gauge on Chesterton Road in Cambridge we had just 1.5 mm of rain in April and the same in May (www.jump.me.uk/wx).



That is pretty much zero as far as its use for garden vegetables is concerned. Indeed, according to the Met Office April was the driest on record and followed a March when we received only half the normal average rainfall.



We experienced a similarly dry spring last year and I think some of us are wondering whether, as a result of climate change, this is something we are going to have to get used to. Down on the Reach allotments there is no ready water supply on hand (yet). Some of us cart bottles full of water from the village to the vegetable patch in wheelbarrows; others lift and carry buckets of water from the small drain that runs on the other side of the track. But whatever the strategy for getting water to the plants, there is probably more we could do to allow productive vegetable growing under dry conditions. So here are a few ideas that I have borrowed and brought together from others (sources at the end of the article).

Grow drought tolerant vegetables

Different crops have different water requirements. By being selective about what you grow you can concentrate on cultivating vegetables that survive best in dry conditions.

- **Leeks** need watering in when first planted, but from then on they will send down strong roots in search of moisture. Earthing up for blanching by drawing soil around stems also helps preserve moisture.
- Root vegetables like **Parsnip** and **Carrot** can survive dry conditions as long as they get well established.
- **Onions** will tolerate low rainfall but drought can cause them to run to seed.
- **Marrows** and **Rhubarb** will survive on low moisture but the size of the crop will suffer.
- **Spinach beet** is the best leafy crop for drought conditions.
- **Jerusalem artichokes**, **raspberries** and **low growing varieties of beans** can do well during droughts, once they have become established.
- The long roots of **asparagus** plants stretch deep into the soil, which allow the plants to flourish in hot, arid environments where little surface water is present.
- **Cowpeas** are warm-season legumes that, like asparagus plants, use deep-running roots to obtain moisture, making them more resistant to drought than most other legumes.
- **Okra** is a member of the mallow family of plants that uses a deep, branching root system to resist the negative effects of heat and drought.
- The **Tepary bean** plant is native to the dry, south western United States, where it has been grown for thousands of years.



Grow drought tolerant varieties

For many vegetables there will be varieties that are more resistant to drought than others. For example, some of the most resistant **asparagus** seed options are the all-male hybrid varieties, which include **Jersey Prince**, **Jersey Giant** and **Jersey Knight**.

The Royal Horticultural Society at Hyde Hall is in an area of Essex that has very low rainfall and this factor, combined with the soil conditions and exposed nature of the site, makes it a challenging area for gardening. The vegetable garden there includes a plot planted with drought-tolerant Mediterranean vegetables that include the following:

- **Tomato 'Golden Nugget'** - an early golden cherry tomato that produces prolifically on a compact bush plant.
- **Celeriac 'Monarch'** - smoother skinned than older strains with a flesh that has a better flavour and texture.
- **Fennel 'Victoria'** - Outstanding yields of large, smooth and pure white bulbs with an enticing and traditional aniseed flavour.
- **Dwarf French bean 'Orinoco'** - Exceptionally flavoured purple podded type that produces high yields that are ready to pick in about 55 days.
- **Aubergine 'Black Enorma'** - Early to crop with prolific sets of huge jet-black fruit.



Mulching and soil improvement

Even before choosing the types and varieties of vegetables to grow, you can start to create conditions where vegetables are more likely to withstand dry conditions.

- **Adding organic matter** – well rotted manure and compost - is the most obvious technique. On sandy soils, organic matter holds over ten times more water and nutrients than the sand. On clayey soil, organic matter glues the tiny soil particles together into larger aggregates, increasing pore space. Another method to add organic matter is to replant the garden in autumn with a green manure crop.
- Add a layer of **mulch** to the garden. This helps retain the moisture content of the soil. The mulch will eventually decompose and add to the soil's organic content.

**Gold Award Winner at the
Community Magazine Awards 2010**

Planting, spacing and organising the garden

The actual arrangement of plants can also help improve resistance to drought.

- **Planting in blocks, rather than rows**, creates shade for roots and reduces evaporation.
- On the other hand, some gardeners recommend that by **increasing the spacing distance** recommended on seed packets there will be more water to go around.
- **Controlling weeds** that compete with vegetables for water means that there is more there for the plants that you want to thrive.
- **Protecting plants and soil from wind** with windbreaks helps to reduce evaporation. 'Live' windbreaks produced by planting perennial crops (e.g. rows of raspberries or blackcurrant or gooseberry bushes) on the side of prevailing winds can help achieve this.
- For some crops (especially useful for fruit trees and bushes but you can also do this with marrows and other widely spaced plants) you can **create a 'micro-catchment'** around the plant, that helps funnel the water to the roots.



Water only when needed

The need for water is not constant during a plant's growing season and it is possible to target the timing and amount of water to add. As a rule of thumb, water is most critical during seed germination, the first few weeks of development, immediately after transplanting and during flowering and fruit production. Also, watering at night is not the most efficient as this can lead to infecting by mildews and fungi. The best time to water is during the early morning hours.

- **Asparagus** needs water most critically during spear production and fern (foliage) development. Less water is needed after ferns reach full size.
- For **Sweetcorn** water demand peaks during tasseling, silking, and ear development.
- **Lettuce** and other **leaf vegetables** need water most critically during head (leaf) development.

- **Members of the tomato family** (tomatoes, peppers, and eggplant) and **Vine crops** (cucumbers, squash) need water most critically during flowering and fruiting.
- **Peas** need water most during pod filling.

As I finish this article, I can hear the welcome sound of rain, so maybe I can avoid lugging another few gallons of water to keep my leek seedlings alive. It is something of a truism that *'gardening requires a lot of water - most of it in the form of perspiration'*. Maybe by applying some of these ideas things will be different next year.

Main sources:

www.allotment.org.uk/articles2/Water_Consevation_Garden_Techniques.php

www.gardenerstips.co.uk/blog/flowers/vegetables-for-a-drought/

www.harvestwizard.com/2009/07/drought_tolerant_vegetables.html

www.cmg.colostate.edu/gardennotes/716.pdf

www.rhs.org.uk/Media/PDFs/Grow-Your-Own/HydeHallDrought

www.jamieoliver.com/forum/viewtopic.php?pid=635050

David Thomas

CROSSWORD WINNER

The winner of Zenida's Crossword No. 6 is Becky Garner from Reach who will receive a £5 Book Token with our congratulations.

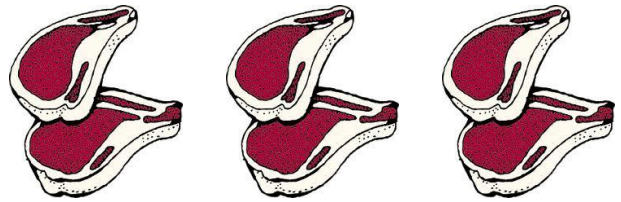
Apologies for a slight error. Clue No.34 across should have read 'Brides often choose a white one'.

SOLUTION TO ZENIDA'S CROSSWORD No. 6

ACROSS: 1. CATHERINE. 3. CAKE. 6. OFFA. 8. CHINA. 9. VEIL. 10. OLD. 12. ASBO. 15. LOVE. 17. GROOM. 19. CONFETTI. 22. CAT. 23. WEIRD. 25. SHAMROCK. 27. ALFRED. 28. SIMPSON. 32. BLUE. 33. STUART. 34. DRESS. 35. ENGAGEMENT.

DOWN: 1. CROMWELL. 2. RING. 3. CHARLES. 4. WILLIAM. 5. HEN. 7. FOOL. 11. DIAMONDS. 13. SILVER. 14. OAK. 16. BOUQUET. 17. GRETNA. 18. TIN. 20. BUTTONHOLE. 21. SWAN. 24. GOLD. 26. JAMES. 28. SALVER. 29. SHOE. 30. ANNE. 31. PAGE.

Chelsea Chop



Some posh restaurant dish or maybe the new Tony & Guy style of the season, but no it's gardening. Around Chelsea Show time it's time to grab those secateurs and do some vicious pruning of herbaceous plants.



Which ones come with experience but the later flowering types are good for starters. Heleniums, golden rod, garden varieties of Rose-Bay Willow-Herb, Dahlias and especially Sedums all benefit from being cut down to half their height now. This removes the top flower bud (the apical dominant bud) stimulating lower buds to grow, producing more flowers, a bushier plant and reducing its height.



Another group of victims for the chop are the early flowerers. Plants like bleeding hearts, dornicums, perennial wallflowers and violas can be encouraged to re-flower by giving them an almighty chop now with perhaps a little fertiliser to pep them up. By continual pruning of perennial violas they can be made to flower right through until late autumn.

Plants that flower with a single spike such as foxgloves and delphiniums can have their season extended by cutting the spike off just as the first flowers are opening.

Cut just below that flower (these can be brought indoors for a bit of a display). You wouldn't want to chop them all but a few spikes done early and the rest after flowering (providing you don't want the seeds) will keep colour going for several weeks longer than normal.



There are perennials that shouldn't be touched. Irises and peony would react badly from such devastating beheading. It's worth having a go at a few of your plants, it's amazing how good they look after only a couple of weeks.

Janet Hall

Horsy Clip Clops

Lesley would like to apologise for road-hogging when out riding. Her horse, Aref, has been diagnosed with osteoarthritis in his front feet, and one of the symptoms is that he really doesn't like the camber of most roads. Therefore in spite of her best efforts to move him over and out of the way of on-coming or passing cars, he prefers to walk down the white line, so they're a bit slow to get out of the way. She is sorry!

Fen Chitchat

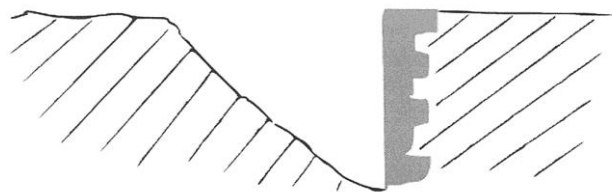
Ha Ha Ha

I don't like saying 'I told you so' usually it's unnecessary. The relevant person knows and knows that you know they know, so there's no point.



Also, most of us don't like to give advice when we're not asked for it. It's not polite. We assume the person will ask if they want advice. So we assumed that the National Trust (NT) would get advice from the necessary people when it erected a lovely bird hide on Tubney Fen. Individually, people muttered to them about the possibility of scaring the birds away when walking to the hide, about noisy crunchy gravel, about clanging gates, about galumphing cattle around the water's edge. So it's pleasing to see that there's now a bank which hides you from view as you walk through a cattle-free zone to the bird hide. The NT do know about these things and I'm sure, get advice from experts in their field.

So if anyone is an expert at a Ha Ha, then it is surely the NT themselves. What is a 'Ha Ha' said most people when we told them what was happening on Burwell Fen. A Ha Ha is "a term in garden design that refers to a trench in which one side is concealed from view, designed not to interrupt the view from a garden or part, while maintaining a physical barrier at least in one direction, usually to keep livestock out." So the main view in the diagram below is from the right (thanks to Wikipedia, fount of all knowledge).



The NT had decided, instead of fences, to use a Ha Ha to keep the cattle away from the excellent new Lodes Way going across Burwell Fen. Firstly we objected. We said that horses/children/wobbly cyclists will drop off the edge, especially when reeds have grown at the bottom of the trench. It won't be visible after a while. They told us that the path along the top would be very wide – easily wide enough to allow for lots of passing room for horses/cyclists/people. Then we asked whether it would work...?

We shut up. If anyone has experience of Ha Has it's the NT, not people like us. Surely they know how to do Ha Has? The only places I've seen Ha Has are at NT properties and they work brilliantly well. You look out across the gardens and surrounding landscape wondering why the livestock aren't grazing the lawns and it's only when you get to the edge of the lawn that you realise that there's an obstruction there, they work so brilliantly well. But on soft fen earth with no retaining wall?

Anyway at the beginning of this month the cattle were brought back onto the Fen for their summer grazing, and they thought it was a laugh ☺



Lesley Boyle

What's "Growing On" at Snakehall Farm?



WHAT EVERY ~~GIRL~~ (OOPS) TRACTOR WANTS?

Don't be alarmed! We haven't gone completely silly at Snakehall Farm this season, well OK just a little.

For any local Friends of the Trust or regular shoppers at the Prospects Trust shop, you will be well acquainted with Tilly the Tractor, perhaps already a signed up friend on her Facebook page <http://en-gb.facebook.com/people/Tilly-Tractor/100000817367983>, or enjoyed a ride on her at an open day? For those readers who do not know about Tilly, let us introduce her to you!

Tilly aka our John Deere 6330 has become the public face of the farm. With her aforementioned Facebook page and her media frenzied start in life through the ITV Big Lottery People's Millions Awards, Tilly is the Tractor about town (well actually just farm as she isn't the tractor causing the tailbacks on the roads, promise). Appropriately named Tilly, at one of our previous farm open days, our John Deere has won a place in all of our co-workers hearts. As a working farm site, Tilly is essential, not only to get the hard work done, but also as she is equipped with an additional seat all our co-workers (people with learning difficulties, disabilities and mental ill health) take to the wheel and experience farm work.

BUT BUT BUT.....why is there always a but? Tilly needs SHOES, HANDBAGS, and hey as it is timely, a TIARA to make her work harder, longer and more efficiently. We really mean ATTACHMENTS. The Prospects Trust is launching the GREAT BIG Tilly the Tractor Attachment Appeal in the hope to drive charitable contributions, donations and general support to ensure Tilly works hard for us all this year. Our Development Officer Maz has a long list of equipment, modifications and repairs from our Farm Co-Management Team and is busy this Spring and Summer trying to raise £25,000 to bring Snakehall Farm back up to date and fit for the future. One essential item is a front loader, vital for moving all that miracle manure about the site, but along with a chain harrow, offset mower, tedder, rake, square baler and trailer the list seems endless at the moment. But as spring has sprung, Snakehall Farm rises to the challenge - perhaps you can too?

If you wish to donate towards the GREAT BIG Tilly the Tractor Attachment Appeal go online at <http://www.justgiving.com/prospectstrust>, email maz.baker@prospectstrust.org.uk or call the office on 01638 741551. With a rotivator purchased already and a further £800 committed towards another attachment, we already have the ball, well tractor actually, rolling. We will be looking at second hand, even third hand, equipment and will be auctioning off some of our older and no longer compatible attachments to help make Tilly's attachment dreams a reality this year.

Marianne (Maz) Baker 01638 741551
Email: enquiries@prospectstrust.org.uk or
maz.baker@prospectstrust.org.uk

Wicken Fen News

We are anticipating that the Trust's purchase of 24 acres of County Council owned land on the outskirts of Reach should be completed by the end of June.



A further meeting was held on May 16th with community representatives to further progress proposed uses of the land which include a village cricket pitch, community orchard/woodland/wood fuel coppice, horticultural and horse riding area. We are delighted that the project is moving ahead and the opportunity to develop a dual community and wildlife area.

The prolonged period of dry weather has enabled us to crack on with the construction of a low level earth bund enclosing 80 hectares of land on Burwell Fen. The bund will eventually assist the creation of floodplain grazing marsh – a priority habitat in the UK Biodiversity Action Plan. The project is part of a European Union funded INTERREG programme called Climate Proof Areas, which is designed to develop low cost non engineering solutions to help climate proof Northern Europe against the adverse effects of climate change.

Our new wind pump which will help re-wet Wicken's ancient Sedge Fen was officially switched on at a ceremony on May 17th. With the television cameras rolling there was a slight delay before a gust of wind got up and the sails started turning (much to our relief). The wind pump will lift calcium rich water taken from Monk's Lode from where it will gradually spread out across the fen, providing much needed water for rare fen species such as the fen violet and marsh pea.

Wicken is one of the best places in the country to see dragonflies with an amazing 21 species found on the fen. To officially launch National Dragonfly Week we are holding a Dragonfly Discovery Day on Saturday 11 June. The day will include a range of exciting free activities for all the family including pond dipping, larva-feeding demonstrations, children's worksheets and dragonfly craft activities. The Fen is home to the National Dragonfly Centre which is open at weekends throughout the summer. The Centre will be running its popular Dragonfly Safaris on 12 June, 2, 3, 23 and 24 July and 27, 28 and 29 August. For those who would like to improve their dragonfly identification skills the Centre organises a number of beginners and advanced courses, details of which can be found at www.dragonflyproject.org.uk.

**Gold Award Winner at the
Community Magazine Awards 2010**



*Left to Right: Paul Woodcock, Richard Powell
and Dr Norman Moore*

If you fancy a good workout and a walk in the countryside, then why not have a go at Nordic walking. The technique uses lightweight poles to enhance normal walking meaning you can walk longer and further, whilst burning around 46% more calories than normal walking. Swaffham Prior based instructor, Oliver Gynn, will be leading one hour walks at Wicken on Thursday 9th and 23rd June and 7th and 23rd July. The walks cost £5 per person which includes equipment hire and instruction. To book a walk, please contact Oliver on 07767 324365 or e-mail him at info@nordicwalking.co.uk.

Hopefully we can look forward to a long hot summer and we have an exciting range of events and activities planned for the summer holidays. We are looking forward to our **Fenland Schools** programme which kicks-off on July 26th. The schools are designed for children aged 6-12 years and involve a range of exciting outdoor activities to encourage a sense of adventure and exploration. Activities include tracking, bird watching, wood carving, tool use, food foraging, fire lighting and outdoor cooking. Sessions will run on Tuesdays and Thursdays from 10am - 3pm, with the final session involving an overnight camp-out.

The schools cost £15 per week over 4 weeks, the fifth day costs £7.50 and the sixth session is free. We encourage children to attend on the same day each week to build up a sense of trust and comradeship within the group. To book or for further information please contact Fiona Symonds, Learning Officer on 01353 720274 or e-mail her at fiona.symonds@nationaltrust.org.uk.

Other events for July include

Wicken Warriors – Mon 25th
Pond Dipping/Minibeast Hunting Tues 26th,
Paddleboarding and
Mud Glorious Mud - Wednesday July 27th and
Fairies and Pixies July 29th.

Activities are extremely popular so please book early to avoid disappointment. Tickets/information are available from the Visitor Centre on 01353 720274.

Howard Cooper

Burwell Women’s Institute



At the Burwell Women’s Institute Annual Meeting on 31st March, Alison Dodds was chosen as the new President of our local branch, in place of Kay Tee, who has served for the past three years. We gave a warm welcome to Alison and hearty thanks to Kay Tee. The Secretary and Treasurer are retaining their posts, but have the additional help of some members who volunteered to join the Committee.

At the Burwell Women’s Institute Meeting meeting on 28th April 2011 the speaker, Wendy Marshgreen, gave a talk about ‘The Art of Accessorising’. Wendy explained how much our appearance matters, as our dress style can influence how other people judge us. Wendy was wearing a simple black dress and demonstrated how the use of various scarves, belts and jewellery could add interest to the dress. Wendy explained that necklines on dresses should be chosen to suit the wearer’s face shape and also how the colour of scarves and dresses should suit the wearer’s complexion. People could feel more comfortable in clothes that fitted their personality and the nature of the occasion.

**Gold Award Winner at the
 Community Magazine Awards 2010**

Striped or patterned fabric should be chosen with consideration for the size of the body, as it could make the shape look slimmer or larger. Shoes also matter, as they can make the leg appear longer and more elegant if chosen with care. Wendy was a fount of information about fashion tips and I’m sure we all benefited from her advice.

Wendy, a beauty consultant, can be contacted via her website www.truecoloursimage.co.uk or by telephone on 01223 837288 or by e-mail on: wendy@truecoloursimage.co.uk. Of course, a variety of other beauty consultants are available via the internet, etcetera, if required.

On June 30th, which is an Open Meeting, the speaker will be Gail Stuart, talking about ‘Life with my father, Eric Morecombe’. The competition will be for a theatre programme.

Meetings are held in the Gardiner Memorial Hall, Burwell at 7.15 for 7.30pm. Do come and join us. For further information please contact Jenny Rogers on Tel. 01638 741205.

Avis Brown and Zenida McDonald

Burwell Mothers’ Union



8 June 7.30pm	Planning and wine at 6 Saxon Drive
22 June 2.30pm	Garden Party (venue to be decided)
23 June 7.30pm	‘Bye, Buy, Childhood’, by Reg Bailey, (MU Chief Exec.) at Great Shelford.
6 July 7.30pm	Barbecue or meal.
13 July 10.00am	MU Communion at Burwell
20 July 2.30pm	Lunch

Please phone **Susan Baker** on 01638 741791 for confirmation of dates and venues. Many thanks to Susan for providing the above details.

The Burwell Mothers’ Union Meeting at 2.30 pm on April 27th 2011 at the Guildhall was well attended and we were entertained by a wonderful speaker, Wynn Norton, who talked about ‘MU Through My Life’. Wynn also showed us some of her beautiful scrapbooks of cuttings about the Mothers’ Union over the years.

After a break for tea, we discussed the subject of whether or not Civil Partnerships Ceremonies should be allowed to be performed in Church. This discussion was further continued after the Prayer Walk on May 4th.

Zenida McDonald

Meeting Gareth Davies



Q. What is your full name?

A. Gareth Davies

I was born in Birmingham. My mother's family were sheep farmers in Wales and I spent holidays on my grandparents' farm. Keeping sheep appears to be genetic. It just skipped a generation.

Q. What is your job?

A. My day job is an E-Learning Manager in the Education ICT Service which is a traded part of Cambridgeshire County Council. In simple terms I run a team of advisers and trainers who help schools make best use of technology. I started my career as a civil servant in the Department of the Environment. After 10 years there I finished as a private secretary in a minister's office working for Tom King in the Commons and Lord Bellwin in the Lords. After doing voluntary adult literacy teaching I decided there were more immediate ways to deliver public service and re-trained as a primary school teacher which is how I came to Cambridge.

Q. How did you come to live in Reach?

A. I was living in Cambridge while teaching. When Lesley and I got together we looked for somewhere more rural. As it was we only looked at one house. We had visited Reach previously and found the pub was closed at the time. The house deal was sealed when we discovered the pub had re-opened.

Q. How did you meet Lesley?

A. We are both bellringers and had known each for a long while before we both found ourselves in Cambridge.

Q. You have two boys, Gwilym and Tim. What pursuits do they follow?

A. They are both into sport - rugby in the winter and cricket in the summer. Gwilym does the triathlon and they both do judo. Tim is shortly to start tennis lessons on the new Reach court.

Q. How many sheep do you have?

A. As of today including the lambs - 107. I always wanted to keep sheep. Even while living in London. When we came to Reach it was my first realistic opportunity. I bought 12 sheep and then wondered what on earth I had done, even though I had prepared by completing a one-year sheep course at Milton College in the evenings and weekends. I also got my hand in by helping with lambing at the college for three years.

Q. What type of sheep are they?

A. North Country mules (the females) and Charollais (the males).

Q. Do sheep have personalities?

A. Yes they certainly do. Some are incredibly placid, and some are incredibly stropky. Sheep will stick together (flock) except when they are lambs when they tend to scatter in every direction.

Q. Where do they graze?

A. I have fields all around Reach: either side of the dyke, two fields along the lode, two up near the wood and a field off Burwell Road which the Fair uses for the car park.

Q. What's the lambing season like?

A. Hectic. Its 24 hours a day. I try and make it happen over the Easter holidays but I don't always get it right. I do have very experienced ewes and they manage to look after themselves if I can't be there every second of the day.



*Tyn-y-celyn, 1973
My grandparents farm near Llangollen
Tyn-y-celyn means the house or farm in the holly.*

Q. Can you shear a sheep?

A. Yes, badly and slowly at the beginning of shearing. I'm a little quicker and tidier by the time I've finished, but nowhere near the 45 seconds or so that a professional shearer can manage.

Q. Is it true that their wool is worth next to nothing?

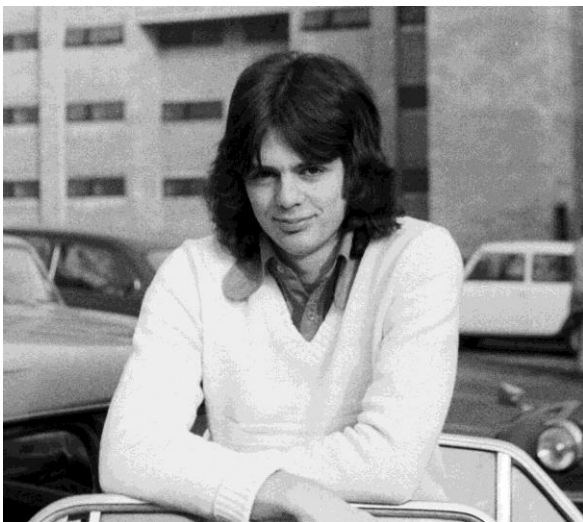
A. That was pretty much the case. A fleece weighs 2 – 3 kilos and a year ago fetched £1.50. The price has pretty much doubled over the last year and is forecast to triple, but no Suffolk wool churches could be built today on the proceeds. The price has increased because the number of sheep in the world has declined, more uses are being found for fleeces e.g. insulation and there is more demand from China.

Q. Can your collie dogs round up the sheep?

A. The old one, Moss, is too old to work. The young one, Shep, is about to go off to be trained. He has the instinct but is too enthusiastic at the moment.

Q. Do you have any pastimes?

A. Cricket, bellringing occasionally, bird watching, bridge and tennis. I was captain of the England bellringing team in the first ever international striking competition. We came second to Australia....as usual



Gareth 1973 at Royal Holloway College

Q. Favourite film?

A. The Usual Suspects

Q. Favourite author?

A. Whatever I'm reading at the time, but I'm very keen on detective fiction so Dorothy L Sayers, maybe and not just because she wrote The Nine Tailors, a bellringing mystery.

Q. Favourite music?

A. It depends on my mood. Led Zeppelin if I want it loud and to pretend that I'm 20 again. Gerald Finzi for something more relaxing.

Gold Award Winner at the Community Magazine Awards 2010

Q. Can you cook?

A. Yes. I do a mean fish stew, but I hate following recipes.

Q. Are you good at DIY?

A. No, hopeless.

Q. Where do you like to holiday?

A. Small islands off the British coast.

Q. What is your philosophy on life?

A. In the words of Bob Marley - don't worry, be happy - or is it the other way round?

Claire Halpin-McDonald

Days Gone By

At this time in 1978 John Travolta and Olivia Newton-John topped the charts with "You're the one that I want".



It stayed there for nine weeks in total.

The Eurovision Song Contest in 1978 was the 23rd of its kind and was held in Paris. The contest was won by Izhar Cohen and the Alphabeta who represented Israel, with their song "A-Ba-Ni-Bi".

The winning entry was a love song sung in the Hebrew equivalent of Ubbi dubbi - the title translates to "I love you" in English. This was Israel's first Eurovision win and it caused problems for several North African and Middle Eastern nations that were televising the contest, even though they were not participating. According to author and historian John Kennedy O'Connor in his book *The Eurovision Song Contest - The Official History*, when Israel became the clear winners during the voting, most of the Arabic stations ended their transmission of the contest. Jordanian TV finished the show with a photo of a bunch of daffodils on screen, later announcing that the Belgian entry (which finished second) was the winner. Norway finished last for the fifth time, gaining the first *nul points* during the current voting system which was implemented in 1975.

The UK entry was "The Bad Old Days", sung by Coco. Coincidentally with 2011, it came 11th.

In sport, cricketing star Ian Botham become the first man in the history of the game to score a century and take eight wickets in one innings of a Test match.

The Somerset all-rounder's blistering performance helped bring England victory by an innings and 120 runs in the second Cornhill Test at Trent Bridge.



He hit 108 runs in England's first innings and then took eight wickets for just 34 runs, reducing Pakistan's second innings total to just 139.

On the railways, 11 people were killed and 17 injured in a blaze on the Penzance-to-Paddington sleeper train. The cause of the accident was burning linen, stacked too close to a heater in a second-class compartment.



The fire started at around 2.00am and it was the worst accident on Britain's railways since November 1967, when 49 people died in a derailment at Hither Green, south London.

Fire-fighters arrived within four minutes, but their efforts were hampered by internal and external locked doors.

In Manchester, the birth of the world's first "test tube baby" was announced. Louise Brown was born shortly before midnight in Oldham and District General Hospital. Weighing 5lb 12oz (2.61kg) the baby was delivered by caesarean section. The consultant in charge of the case, Mr Patrick Steptoe, said "all examinations showed that the baby is quite normal. The mother's condition after delivery was also excellent."

Louise and her husband now live in Bristol and had their first child in January 2007.

In Reach the two main issues were the council trying to cut back on the number of times they cut the grass verges and the problem of fly tipping. It seems quite sad that here we are, 33 years later and nothing seems to have improved in either of these respects.

Sports Day took place and appears to have been a great success.

Sarah Harrison (HMS Reach) won the under 5's fancy dress and Jonathan Morris had a walkover in the 7-9 age group as a chef. Ester Morris won the John Robinson cup with Michael Greenhill coming a close second.

James Robinson put up a splendid effort to win the Junior Reach Marathon title for the second year running and Paul Cole added his name to the Senior Reach Marathon trophy.

Reach Fair took place in May, as usual and this year a special exhibition, suggested by Maisie Whitehead, took place. It reflected Reach past and present, starting with specimens of fossils, bog oak plus Stone and Bronze Age material. Outstanding was the polished flint axe, lent by Mr D. Fuller.

Villagers at the time were surprised to see a photo of how Women's Lib had come to Reach in 1906 with a "cricket team of ravishing beauties".



Not sure I'd quite go as far as that. In fact it all looks fake to me – isn't that Ross Clark, with wig, front row, second left?

David Parr

MIDSUMMER FESTIVAL

Swaffham Prior

in aid of **St. Cyriac & Julitta's Church**
24th – 26th June 2011

Friday 24th
7.00pm for
7.30pm

MIDSUMMER MADNESS Village Hall
With Hilary Sage and Friends
Tickets £7.50, bar available

Saturday 25th
11am-5.00pm

MIDSUMMER MARKET St. Cyriac's
A range of stalls on the theme "Flowers & Gardens"
Plants, Books, Bric-a-Brac, Paintings and Cards
Free Entry, Coffee Bar

2.00-5.00pm

Strawberry Teas, Anglesey House (in aid of St. Mary's Church)

Doors open
7.30pm
for 8.00pm

PIANO RECITAL The Manor, Lower End
by kind invitation of Mr and Mrs Adrian Dickens
"French Masterpieces" including Debussy, Ravel and Satie
an evening with Ian de Massini
Tickets £7.50
(Please reserve places in advance on 01638 743693)

Sunday 26th
4.00-4.45pm

CONCERT IN TWO PARTS
Part I: St. Cyriac's "Songs of Love" by Carl Rütli
Cambridge Voices with cellist Veronica Henderson
Tickets £6.00 (no concessions)

4.45-5.15pm
5.15-6.00pm

Interval with refreshments, St. Mary's
Part II: St. Mary's
"Flowers for All" arranged by Ian de Massini
Cambridge Voices, suitable for all ages
Tickets £6.00 (adult) **£4.00** (child)
(Adult tickets for both Parts **£10.00**)

7.00pm
7.45-8.30pm

COMPLINE
Rehearsal and talk in St. Mary's
Service in St. Cyriac's

Ross's Reflections

The announcement by Wandsworth Council that it is to charge children £2.50 a time to use the swings and slides is an eye-opener to the lengths to which councils are prepared to go in order to raise revenue, having suffered cuts in their government grants.



The council has excused its tight-fistedness on the grounds that while the swings and slides are maintained from the council taxes of Wandsworth residents, the facilities are used by many children who live outside the borough. If Wandsworth wasn't one of the wealthiest areas in Britain, especially favoured by City bankers, one might be moved to sympathise. It is tempting to introduce some charges in Reach for playing on the swings, parking on the roads and even breathing the air, payable only by visitors from Wandsworth.

But then Wandsworth isn't the only council to be trying to extract money in novel ways. I had a shock the other week when I rang up our own local authority, East Cambridgeshire, for some advice on planning applications. Previously councils were happy to give a bit of advice for free. After all it cuts bureaucracy for everyone if officials are prepared to advise whether a particular project is likely to require planning permission and if so, what is likely to be acceptable. I was rather shocked, then, to be told that I must submit a formal application for pre-planning application advice – and pay £80. It felt like consulting a City lawyer with a meter running on his desk.

You can, however, save yourself some bother by checking the planning regulations yourself. They are published online at www.planningportal.gov.uk. The site has an interactive tool where you can enter the details of your project and find out whether it will require planning permission. Extensions do not always need planning permission. If the extension is small and your property has not been extended since it was built, or since 1948 in the case of older buildings, you may be able to take advantage of so-called 'permitted development rights'. The rules are complicated in Reach, however, by the existence of a conservation area in the centre of the village.

On the other hand laying an area of hardstanding in your front garden measuring more than five square metres in size does require planning permission if the material is impermeable.

This is a regulation introduced after the 2000 and 2007 floods when it became clear that excessive areas of tarmac are reducing the absorption of rainwater.

Finally, it is easy to become confused between planning permission and building control (the latter concerns compliance with the building regulations). Some projects may require planning permission but not building control, and vice versa. This also is explained on the planning portal website. In the case of Reach, building control is also overseen by East Cambridgeshire District Council, but through a different department. And yes, the council is making a nice little earner out of this too, as I discovered when I had to hand over £70 to an official to inspect some window frames I had changed. Funnily enough, I didn't offer him a cup of tea.

Ross Clark

01638 743725 or 07967 121654

Know Your Parish Council

Your councillors are:

Michael Aves	Vice-Chairman	742800
Malcolm Brearley	Councillor	
	mjbrearley@btinternet.com	
Ross Clark	Chairman	743725
Rita Dunnett	Councillor	742943
Hilary Fielding	Councillor	741853
Joyce Harrison	Councillor	742405
David Thomas	Councillor	742676

Your Clerk is **David Parr**:

20 Fair Green Reach CB25 0JD

Tel: 01638 744081

Email: reachparishcouncil@live.co.uk

Meetings take place in the Village Centre on the first Wednesday of each month. They start at 7.30pm and all Reach villagers are welcome to attend.

In addition to their councillor duties;

Rita Dunnett is Play Spaces Officer, overseeing our two play areas and playing field.

Hilary Fielding is Rights of Way Officer.

Little Windmills Pre-school



It's been another busy term at Little Windmills. Firstly we said thank you to our mums for all their hard work by making cards and tissue paper flowers. This was followed by our Easter egg hunt. The children were very excited during the build up to Easter and they enjoyed looking for hidden eggs in the church grounds. Olivia led our Easter service in the Church involving staff, children and parents thinking about what Easter means.

The better weather has meant we have had lots of sessions where the children have been able to move freely between the indoor and outdoor play areas for most of the session. We have had a lot of fun with our new sandpit which we obtained with our Tesco vouchers last year.

The children were very excited about the Royal wedding and we talked at length about 'the dress' and made flags and crowns for the big day.

Reach Fair day is a busy day for staff and a small band of loyal parent helpers. This year, as well as our traditional lucky dip, we had a very successful tombola and a shuffleboard game supplied by our Parent Committee Chair. The latter game proved to be very popular and brought out the competitive spirit in many. Our quiz attracted more than 30 entries with only one wholly correct. Congratulations to Vicky Parr from Ely for winning the £25 John Lewis gift voucher. This year also, one of our parents, Kelly Mead, sold her delicious cupcakes (see her website www.carolinabakery.co.uk). A big thank you to all those who helped towards the stall beforehand and on the day.

This term we will be looking at farm animals and wild animals with the children. Mrs Jackson, one of the Reception teachers from Swaffham Prior School will be visiting those children going to school in September as part of our transition process.

We are still looking for compost if you have any you could donate. Thank you to the person who left us three pastel wooden boxes outside the Village Centre as these have proved very useful.

If anyone has any Tesco, Sainsbury's or Nestle Box Top vouchers looking for a home we would be delighted to receive them. Thank you.

**Gold Award Winner at the
Community Magazine Awards 2010**

You can keep up with our activities on Twitter and also on our website.

If you would like to know more about our pre-school, please visit our website at www.littlewindmills.co.uk or ring 07803671200 during our session times to check availability. Places are available in September.

Susan Bluck and the Little Windmills Staff

Swaffham Prior Primary School

It has again been a very busy time for us at Swaffham Prior School with the children taking part in many events.



Firstly there were our Royal Wedding Celebrations in school on Thursday 28th April. The children spent the day taking part in many different activities to celebrate the occasion. This included our own very special street party – type lunch. The children were also asked to design a Royal Wedding invitation as part of a competition run by the Swaffham Prior Village Street Party committee. These invitations were displayed at the street party and winners were presented with some lovely prizes.

Our oldest pupils were also invited, as is a long-standing tradition, to present their Maypole dancing at the opening of Reach Fair. This was another very successful and enjoyable occasion for the children.



We are currently in the process of appointing a new head teacher for the school as I shall be leaving here at the end of July – with very mixed emotions! I was very fortunate to secure a new position very much closer to where I live in Buckden.

I shall be sad to leave the school and the village but I could not turn down such an opportunity. We will also be saying a sad farewell to Mrs Lyn Tidman who has taught at the school for many years but has decided to take early retirement to spend more time with her family. We wish her well for the future and thank her for her hard work and dedication to the school. We are also interviewing shortly to find a suitable replacement class teacher.

We are all looking forward to opening up our swimming pool for the summer season after the half-term holiday. All our children will benefit from two sessions per week. We also open the pool after school and during the summer holidays for parents who have attended our training course to bring their children along to swim. It is a lovely resource to have in school and obviously equips the children with such vital skills.



We are frantically collecting Tesco and Sainsbury vouchers for schools as there is some Computer Control equipment that we would very much like to order this year. If you have any vouchers that you can donate to the school please send them in with one of our pupils or bring them into the school office – we would be very grateful!

Final preparations are also underway for our residential trip to Aylmerton Field Study Centre in Norfolk. We take our Year 5 and Year 6 pupils there for a week's activities. As well as being a very enjoyable time it also reinforces lots of important skills such as team work, co-operation and trust.

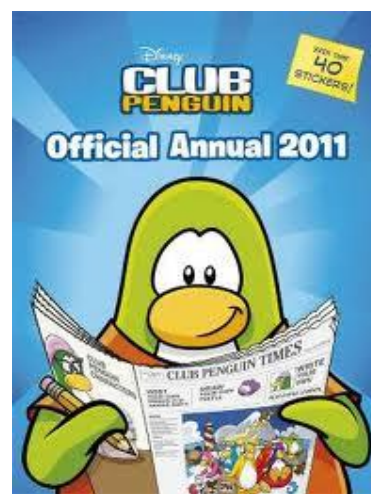
We just hope we get a dry week as it does makes things easier!

As part of our Outdoor Learning projects this year we are very fortunate that Wicken Fen have secured a grant to spend with us which will enable all our classes to carry out some projects this term both here and at Wicken fen, free of charge. This ties in very nicely with our planned extended use of the new outdoor classroom and of our immediate environment.

Diane Hawkes
Head teacher

Website: www.swaffhamprior.cambs.sc

Club Penguin Activity Book Review



The club penguin activity book is a great option if you like activities like word searches, cross words, and quizzes. I got this book because I won a runners-up prize, a book token in Zenida's crossword. There are also a lot of stickers in the book! If you like the book why not play the online game just go to <http://play.clubpenguin.com/index.php?lang=en> to make a free account.

You can get pets called pufles and they look like this:



Dylan Steed

KIDS PAGE!!



Susie Tucker

WHERE WAS THIS PICTURE TAKEN?



REACH FAIR RIDES!!

They have been muddled up!!!

TEMREITOE =

.....

TOPOCUS =

.....

GWB IEElh =

.....

WSGNI ABTOS =

.....

Some things to think about:

1. If someone says "I always lie" are they telling the truth? Or are they lying?
2. As I was going to Saint Ives,
I crossed the path of seven wives,
Every wife had seven sacks,
Every sack had seven cats,
Every cat had seven kittens,
Kittens, cats, sacks, wives,
How many were going to Saint Ives? (This one has an answer)
3. I know that I know nothing at all

TOP 5 THINGS TO DO IN REACH!!!

1. Go for a walk along the dyke and see what you can see!
2. Play tennis at the tennis court!
3. You could do an assault course at the play area- what's your best time?
4. Make a den near your house!
5. Go for a walk along the lode/river and see if you can see any fish!

Draw your favourite fair ride!

The answers to the Anagrams and the Picture Quiz are on Page 39

JODIE'S TIPS

Washing a pony's tail

By Jodie Halpin McDonald

good tips:

1. Roll your sleeves up before you start.
2. Give him or her a hay net.
3. Beware of the pony kicking.
4. Beware of gas.
5. the pony looks beautiful after you've finished.



Rita's Recipes

Rhubarb Rhubarb Rhubarb

Rhubarb Chutney

Ingredients

1 kg of Rhubarb (sliced)
2 Large white onions (chopped)
225g Sultanas
225g Demerara sugar
10 Whole tomatoes (quartered)
600ml of Malt vinegar



Method

Gently fry the tomatoes over a medium heat until soft. Add the rhubarb, onions and sultanas and slowly bring to the boil stirring continuously. Add the sugar and simmer until it dissolves, then pour in the vinegar stirring constantly, and the chutney will slowly start to thicken up. Cool and store in sterilised jars.

*This chutney is delicious served with **pork, duck or oily fish***

Rhubarb Fool

Ingredients

3 sprigs Rosemary
85g Castor sugar
450ml Thick Custard (ready made)
600g Rhubarb (cut into 2.5cm chunks)
300ml Whipping cream

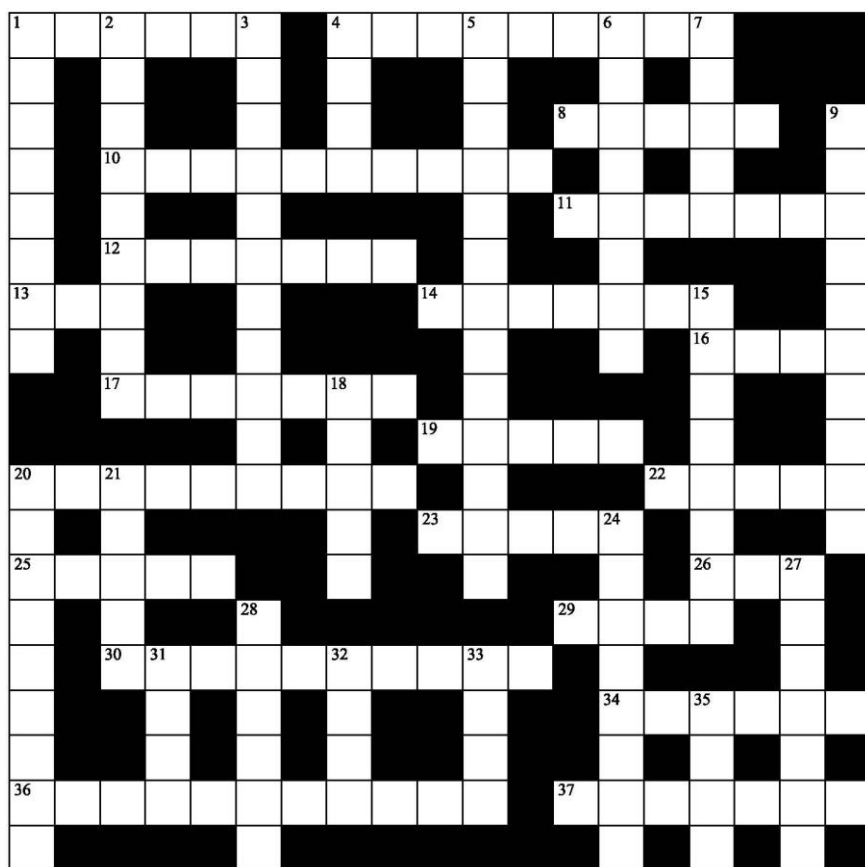
Method

Wash and prepare the rhubarb. Gently cook in a pan with the sugar and rosemary until it is soft, thick and pulpy. Remove the rosemary and allow rhubarb to cool down. Lightly whip the cream. Carefully fold together the whipped cream, custard and rhubarb. Transfer to a large bowl or individual dishes. Cover with cling film and chill.

Serve with Almond biscuits or sponge fingers.

THANK YOU -to all the ladies who helped me in the tea tent on 'Fair Day'. Your support was greatly appreciated. Rita

Zenida's Crossword No. 7



The winner and answers to the previous crossword can be found on page 15

A £5 Book Token will be awarded for the first correct entry opened after the closing date. Please send your entry by Friday 8th July 2011 to:

Zenida's Crossword No. 7
North View House, 16 Chapel Lane,
Reach CB25 OJJ giving your:

Name: _____

Address: _____

Tel: _____

ACROSS

- 1 Talisman
- 4 Spotty dog
- 8 Oven
- 10 Ice-cream or city
- 11 Small dog
- 12 River bird
- 13 Two play duet
- 14 Buying, selling
- 16 High male voice
- 17 Harsh, shrill cry
- 19 Capital of Idaho
- 20 Sacred writing
- 22 Goddess of Faith
- 23 French composer (b. 1838)
- 25 Winston Churchill often had one
- 26 It might leave a sinking ship
- 29 Drove fast
- 30 Railway engine
- 34 Chinese house-boat
- 36 Repair, refit
- 37 Very long South American river

DOWN

- 1 Indian medicine
- 2 All agreed
- 3 Disposition
- 4 Boring
- 5 Transformation.
- 6 Brave
- 7 Not ever
- 9 Clock-maker
- 15 Dance (16th C)
- 18 Hot dish
- 20 Clerk, typist
- 21 Kingly
- 24 Woven wall-hanging
- 27 Hot. Mexican sauce
- 28 Limits
- 31 Capital of Norway
- 32 Eject, expel
- 33 Mineral seam
- 35 In good condition



Cricket Report

After an emphatic victory against the Suffolk village of Bye (R Clark 137 n.o. and 9-17), Reach went on to defend the village's honour against Hemsby, near Great Yarmouth, in the regional quarter finals of the National Village Cricket Cup.



This year the competition is sponsored by Persimmon Homes, whose name the captains of competing teams have been asked to repeat at every opportunity.

Hemsby won the toss and elected to bat, on a cabbage patch of a wicket with light rain falling. Steaming in from the bungalow end, Tony Fordham struck blood after just five balls, with Ewen Cameron taking a sharp catch at point. While our dreams immediately turned to the final at Lords on 4th September, Hemsby then blasted themselves quickly up to 43 before a flurry of wickets from Tony Fordham reduced them to 91 for 5. Rob Steed proved invaluable in the field, taking three catches. A brief opportunity to dominate the game, however, was missed as Hemsby's Number 7, Sayer, took us on. Several sixes quickly disappeared in the direction of Lowestoft (where, incidentally, Persimmon Homes have a selection of three and four bedders available at their Manor Rise development, with prices beginning at just £148,707).

Twice his innings might have been prematurely ended, but catches slipped from hands more used to handling potatoes. A partnership of 100 took Hemsby to 253. A couple of consolation wickets in the final over did nothing to make our task easier.

At 27 without loss, however, our innings was built on foundations as solid as those of a Persimmon Home. Bryan Pearson rode his luck with typical bravado to reach 38 and Ewen Cameron smacked 15 in one over. But our flurries of brilliance were all too brief in the face of a tricky combination of uneven bounce and a slow outfield. By the end of the 30th over we were 108 for 5 and our reply was beginning to look rather more like one of those poxy little nobby boxes put up by Persimmon's rivals. The roof finally caved in on Reach's innings at 136 all out in the 38th over: disappointing, but a respectable performance in our first-ever cup run.

We next go on to play the Rain Men, possibly with or without the services of Gareth Davies, who has given the selectors one of the oddest replies in 150 years of English: "yes I can play, but only if there are sheep for sale on Thrapston market". Quite why one needs a sheep to turn out on a cricket field is something I am still trying to fathom.

Cricket fixtures for 2011:

Sat 4 June	Castle Hedingham (away)
Sun 19 June	Petersfield (home)
Sat 25 June	Unemployables (away, Northiam, East Sussex)
Sun 17 July	Dave Silk's XI (home)
Sun 31 July	Swaffham Invitationals (home)
Sun 4 Sept	Unemployables (home)
Sat 24 Sept	Burwell (home or away)!

Ross Clark
743725
rossjclark@aol.com

Bellringing

At Swaffham Bulbeck, St Mary, Saturday 14th May 2011 in 40 minutes, 1260 Plain Bob Doubles

1. Lesley H M Boyle
2. Gwilym R Davies
3. Carol I Kitson
4. Sharyn O Robinson
5. Martin R Kitson (Conductor)
6. Derek E Latchford

Rung as a birthday compliment to Tim Davies, brother to ringer of 2nd Tim is 11 and has listened to many hours of bellringing over the years. Do you have a special event coming up? Let us know, or come along to ringing practice on a Wednesday evening, any time after 7.30pm.

Lesley Boyle

Sports News

As a triathlete, predictably, there are three sports that particularly interest me – running, cycling and swimming.



Running seems to have featured a fair bit in this sport slot so, to balance things out, this round-up features a talented young swimmer. In addition, I had a think about who are the people I see most often cycling too, from and around Reach. Three individuals and one family sprung to mind immediately - Ray Folkes, Graham Lingley, Dennis Millard and the entire Blocksage household. If you don't know who they are then read on! But since triathlons start with the swim that's where I will start, with a 'news clip' from Charles Bartlett who, as a proud grandfather, writes:



Since the September 4th last year Chloe-Jèane Parsley has been swimming competitively when she became 9 years old. Her success at the various Open Meets in East Anglia have been remarkable. Chloe-Jèane has been swimming with Newmarket Swimming Club for five years. In November at the West Suffolk Open Meet, Bury St Edmunds, out of a total of 150 girls of mixed ages she was placed second and narrowly missed first place by four points (on that day she won five gold, two silver and one bronze). In January 2011 Chloe-Jèane was head and shoulders above her competition at the Ipswich Open Meet after scooping the Top 9 Year Old Girl Award. Although Chloe-Jèane has only been swimming competitively since September last year her inexperience did not get in her way when she won four gold and two silver medals from her seven swims.

**Gold Award Winner at the
Community Magazine Awards 2010**

During March Chloe-Jèane was competing at the Suffolk ASA County Championships at Ipswich and managed to win eight medals: two gold and six silver. The gold medals were for the 50 metre backstroke and 50 metre butterfly making her the 9 year old Suffolk County Champion in these two events.

Reach cyclists clock up some serious mileage!

Driving and cycling around Reach there are some people you almost always see on their bikes, you may not know who they are but I bet most of you will recognise them from the photos below. Let's start with someone I consider to be the cycling patriarch of Reach - Ray Folkes

Cycling for 70 years and still going strong

Ray Folkes is a Reach resident through and through and has lived in the village all 89 years of his life. His wife Anita joined him in the village in 1957, having moved to live here all the way (!) from Swaffham Prior. The couple have never owned a car and they have relied on their own two feet, public transport and Ray's love of cycling to get everywhere and everything. Nowadays most of us get our first bike as 'tiny tots' Ray had to wait until he was 19 for his first bike, bought, second hand, for £2.50 from a bike shop in Burwell. His last bike he 'acquired' 4-5 years ago - donated to him by an elderly gentleman in Burwell who clearly realised Ray would put it to good use.



In the past, Ray used his bike mainly to get to work on a farm in Swaffham Prior. Those of you who know him will also know he proudly displays a grin with two missing teeth – an early cycling ‘injury’! Seems the farm where he worked in Swaffham Prior kept spirits up during the hard and smelly work of sheep dipping with liberal quantities of ‘ale’ and it was whilst cycling back from this thirsty work that Ray crashed - his teeth and the tarmac met and the tarmac won. Ray claims his coat got caught in the wheel, Anita clearly thinks it had a lot more to do with his liquid lunch and dinner! The odd bump and bruise, roadside blackout and dizzy spell don’t put Ray off getting on his bike though. ‘He asks me every day if I need anything in Burwell because he wants an excuse to cycle there’ says Anita and it’s something he still does one to three times a week. Until recently he used to cycle almost daily to tend gardens in Swaffham Prior and Burwell. Many of you will have seen him with a hoe across his handle bars and fork balanced along the bike frame. Though the days of cycling to Cambridge are over, he still makes the odd trip to Newmarket mainly to frequent the cycle shop!

As someone who tries, at length, to convince a sceptical family of her need to invest in all the latest (expensive) hi-tech wet weather cycle kit, I asked Ray about what he does if, say, its pouring with rain ‘get wet!’ he replied without hesitation. He admits to having a high visibility jacket but complains it won’t go over his proper coat. He does wear gloves and a woolly hat but that, it seems, is about his only concession to the elements (as opposed to my three thermals, gortex jacket, gloves over shoes etc).

I did a (very) back of the envelope calculation. Ray has owned a bike for 70 years so, even if he only cycled to Swaffham Prior and back on a daily basis, that’s 51,100 miles. Now throw in a few return trips to Cambridge (ca 25 miles) and Newmarket (ca 12) and more than a few to Burwell (ca 4 miles) and we are talking serious mileage. He and his bike(s) must have seen some changes and have tales to tell!

Cycling saves queuing and carbon

Our second ‘cycling personality’ is Graham Lingley, who lives on the Hythe with his wife Debbie and two daughters Alice and Hazel. Graham got into cycling in the mid 80’s when mountain bikes first started to appear. He comments that they were ‘something of a rarity outside of London and treated as a bit of a novelty’. He modestly claims that his racing record is a bit thin but he was ‘good at being average’. I suspect he was far better than average and past highlights include cycling up Snowdon, summer trailquest events (orienteering by mountain bike) and the sponsored ride for the school swimming pool (from Lands End (almost) to Swaffham Prior). Lowlights; ‘ending up in Macclesfield hospital having my kneecap scoured clean after failing a trials obstacle and autumn/spring trailquest events where

we would have a wild overnight campsite and it always seemed to rain all night’.

Graham’s main claim to fame (at least as far as I am concerned) is that he cycles to work in Cambridge pretty much every day irrespective of the weather – wind, rain, snow, ice. In fact, he has been cycling to work for the last 20 years. Having made a few guesses about Ray’s mileage I asked him for a few quick calculations in relation to his - the answer is staggering. Around 50,000 miles from Reach in 13 years and close to 100,000 miles overall. The Lingleys put many of us to shame in environmental terms and the mileage that Graham clocks up on his bike translates into almost £15,000 in fuel at today’s prices and 28 tonnes of CO₂.



His dedication to the cause led him to organise the winning team in the Cambridge Cycle Challenge (see page 35). Commenting that the challenge isn’t finding cyclists but getting them to sign up to the competition - but as ‘Challenge Champion’ he managed to rally 627 people from ‘MRC Cambridge LMB and Centre’ to win the category for organisations or departments of 500 or more staff. Graham’s team achieved 27.8% participation with 627 staff logging 2,776 trips and 16,778.4 miles and between them burning 323,194 calories and saving 2,983 kg of CO₂.

Apart from the fact that cycle commuting is kinder to the bank balance and the environment what else does Graham like about it? ‘Not being trapped in a car as I can’t stand queues’ and it has the added plus that, the need for fuel means ‘you never need to be

on a diet! He does confess to a few loathes as well as likes 'head winds, punctures and inconsiderate drivers who consider you second class'.

Now and again he says he copes with awful weather by taking the car but judging by the conditions I have seen him cycling in those 'car days' must be truly horrendous.

Dennis Millard

Dennis is 68 years old. He has lived in Reach all his life and like Ray he has never owned a car. He started cycling as a lad and cycles regularly to the present day. Nowadays he mostly goes to Burwell for his lunch, to shop, visit the museum or watch the cricket. Previously he would cycle to Cambridge, Newmarket and all over.



Keeping up with the kids

The 'family party' in all this has to be the Blocksages: David (dad), Debbie (mum), Daniel and Felicity. I hope they will forgive me for not writing about all of them but I asked Debbie how she started. 'As a

youngster I couldn't wait to get home from school to set off on my bike for an adventure' she says.

It's amazing how many miles you can clock up just by pottering around your home town and Debbie reckons she covered about 34,000 miles over 15 years on her first mountain bike and about 8,000 in the three years she has lived in Reach. Like Graham the savings in fuel are a big incentive. A regular routine involves driving into Cambridge with the bike in the back, returning only as far as Bottisham and cycling home from there only to ride back to Bottisham at 3pm to collect Felicity from school. 'The journey saves me 10 miles of petrol and keeps me fit' she adds.

In August 2006 the whole family went on a weeks cycling holiday in Chamonix, France. 'David was not so keen when he realised what sort of family holiday I had booked' but they went out in all weathers and obviously relished the alpine roads. 'One day we took five hours of climbing mostly with our bikes on our backs and then just 30 minutes to descend the other side'. It's a holiday Debbie is keen to repeat.



And the 'keeping up with the kids' bit? A new racing bike is part of that plan mainly to keep up with Daniel. 'The days of calling behind me telling him to keep up are long gone though' she reflects 'now he has the pleasure of telling me'. Debbie has certainly set herself a challenge to keep up with her son as Daniel discovered the joy of time trialling last year. Described as 'your body and your bike against the clock' these are bike races in which competitors set off one minute apart and cycle between 5 and 10 miles flat out. Before my first one I was told that if I was not hurting all over the entire time I wasn't doing it properly.

Daniel has flown around a five mile course at Fordham and a ten mile one at Bottisham this year in 13m51s and 27m32s respectively.

Finally, a confession from me to any of you who were driving along the A14 or A11 a couple of Saturdays ago and cursing cyclist after cyclist, with high viz

numbers on their backs and alien pointy helmets, going flat out on the inside lane. I'm afraid I was one of the 130 – on a mission to cycle 25 miles from the Newmarket A142 turning to Fourwentways as fast as I possibly could. Why do we do it? Simple, the course is fabulously fast – flat, no corners and a great road surface. I think it's more scary for the drivers than the cyclists all out to get under the one hour mark. Sadly, I missed that by just 2 annoying minutes so I will just have to try again. In the meantime, I know, like many of you, I will pass cyclists on the A14 and think "you idiot"!

Juliet Vickery

juliet.vickery@yahoo.co.uk

Have your say on the future of Reach

Help to produce a 'Vision' for your village

East Cambridgeshire District Council is looking for your views on how your village/parish should change or improve in the future. What sort of place would you like Reach to be? What are your priorities for the village and the wider parish? For example, do you want better local facilities, new homes or more employment opportunities?

The District Council wants to work in partnership with local people and the Parish Council to draw up a long-term Vision for Reach. The Vision will set out how Reach should develop/improve over the next 20 years. It will look at issues such as:

- local housing needs
- employment opportunities
- sites for development
- the quality of the local environment
- infrastructure and facilities – whether to protect and/or improve

The Vision will be used to guide decisions on future development and planning applications. It will also help ensure that key infrastructure and facilities are retained and enhanced. The Vision will be included in the statutory development plan for the East Cambridgeshire - known as the 'Core Strategy'.

www.cambridgecyclechallenge.org.uk

The Cambridge Cycle Challenge is a fun, free competition to encourage people working or living in Cambridge to remember the joys and benefits of riding a bike. It's all about participation - which organisation or department can get the most members of staff cycling?

Organisations and their departments compete across six size categories to see who can get the most members of staff to ride a bike for at least 10 minutes over a period of a few weeks (this year from 14 March - 3 April 2011). Participants can cycle wherever they feel comfortable and at any time - on an evening or at the weekend, to work or for leisure - and will log their rides on this website.

In 2011 Cambridge cycle challenge participants clocked up 238,290 miles over 22,827 trips equivalent to cycling round the world 9 times.

A questionnaire will be available for people's comments from **27th June 2011**. The questionnaire can be viewed on the District Council's website at www.eastcambs.gov.uk/core-strategy-review; or paper copies can be obtained by phoning the Forward Planning team on 01353 665555. The website will also have questionnaires for other settlements in East Cambridgeshire (which you are welcome to fill out), as well as other background documents.

Comments should be returned by **18th July 2011**. The District Council is keen to get your views and would like as many people to get involved as possible. Your comments will help to shape a draft Vision for Reach. The draft Vision will be published early next year when there will be a further opportunity to make comments. The final Vision should be published in late 2012 and should hopefully reflect the needs and priorities of the local community.

May Parish Council Meeting Draft Minutes



DRAFT Minutes of Reach Parish Council meeting held on: Wednesday 11th May 2011

Attendance

Michael Aves	Vice Chairman	Present
Malcolm Brearley	Councillor	Present
Ross Clark	Chairman	Present
Rita Dunnett	Councillor	Present
Hilary Fielding	Councillor	Present
Joyce Harrison	Councillor	Present
David Thomas	Councillor	Present
David Parr	Clerk	Present
Allen Alderson	District Councillor	Not Present
David Brown	County Councillor	Part-time

1. Forum for Members of the Public

Two members of the public attended. The issue of village cleanliness was raised and the suggestion made that the area where the Mayor of Cambridge opens the Fair be better prepared for the event. **The Clerk** will add both items to the agenda for the June meeting.

2. Election of Officers

The following officers were elected:

Chairman	Ross Clark
Vice Chairman	Michael Aves
Play Spaces Officer	Rita Dunnett
Rights of Way Officer	Hilary Fielding
Tree Officer	John Reed
Swaffham Prior Parochial Charities Officer	John Robinson
Village Centre Officers	Rita Dunnett and Joyce Harrison

3. Declaration of Interests

There were none.

4. Minutes of Previous Meetings

The Minutes of the previous Parish Council meeting were reviewed and signed.

5 (1) Amenity Fund Committee

The Amenity Fund Committee rejected an application from a villager for the purchase of a fruit picking ladder on the basis of health and safety concerns and also because it would not benefit a significant proportion of Reach villagers.

5 (2) County Council Report

I represented the County Council at a meeting of the Local Government Association Rural Commission. One of the main topics for discussion was the practicalities of the Government plans to roll-out superfast broadband nationwide. The Greater Cambridgeshire Local Enterprise Partnership has applied to be one of the first areas to take part in the project.

The East Cambridgeshire Community Safety Partnership, which I sit on, met to receive various updates on crime and disorder matters. The ECCSP has been given a new duty by Government, which is to undertake a review of any homicide in which domestic violence has played a part. We had a lengthy discussion on how to fulfill that duty (which hopefully will not be needed) and agreed to ask the next meeting to appoint two Councillors to a county-wide panel from which an independent Chairman for any review will be selected.

I also attended a number of informal cabinet meetings.

As reported previously, Cllr Jill Tuck has announced that she will not be seeking re-election as Leader of the Council at the Annual Meeting on 17 May. At a Conservative Group meeting we elected Cllr Nick Clarke as Leader (designate) of the Conservative Group. Subject to a formal vote on 17 May Cllr Clarke will be confirmed as the new Leader of Cambridgeshire County Council. I feel greatly honoured that, subject to a formal vote at the same meeting, Cllr Clarke has asked me to join the County Council Cabinet to take responsibility for the Children and Young People's portfolio. Since that news became public, my email in-box has been filling up with meeting requests! I am currently receiving numerous briefings from Directors and other officers and I am really looking forward to the challenge of my new role.

5 (3) District Council Report

The Newmarket Recycling Centre which was due to close on May 9th will now remain open until July 31st whilst discussions continue over its future.

A traveller family has moved onto Forty Acre Drove at Red Tile Farm. Action is to be taken to have them removed.

A considerable amount of fly-tipped debris is on Barston Drove – this will be removed shortly.

5 (4) Financial Report

The Parish Council is in a financially sound situation; however non-budgeted costs of £666 for the cost of the Parish Council election and £145 for excess audit charges due to the tennis court construction costs being included in our year ending 2012 accounts means that for the current financial year a loss of £660 is forecast. This would leave the Parish Council with reserves of approximately £4,200 (48% of spend) which is a reasonably healthy situation.

5 (5) Neighbourhood Panels Report

No meetings have taken place since the last Parish Council meeting.

5 (6) Parish Council Members

No meetings attended.

5 (7) Play Spaces Officer Report

Neville Dunnett will carry out the necessary repairs to the chicken.

5 (8) Rights of Way Report

A villager had complained about accessibility because of overhanging trees within the village. **The Clerk and Councillor Fielding** will review the problem and discuss the situation with the landowner, as necessary.

The issue of byways becoming rutted and not repaired was raised. Whilst this is the responsibility of the County Council, Councillor Fielding felt that in the current financial circumstances the villagers should help themselves by asking users of the byways to assist in the repairs. It was agreed that **Councillor Fielding** would take the responsibility for this activity.

5 (9) Speedwatch

There was no activity in the preceding month. **The Clerk** was asked to check whether ex-Councillor King and ex-Councillor Platt would be prepared to carry on with their Speedwatch involvement. **Councillor Fielding** will take over responsibility for this activity.

5 (10) Village Centre Committee Report

Whilst it was a good Fair, takings and profitability were down on the previous year.

6. Land Availability – 24 acres on the Burwell Road

The National Trust, which hopes to buy this land, has identified, with villagers input, three main areas of community involvement (1) orchard, (2) horse ménage and (3) cricket/football pitches. In addition, the possibility of horticulture therapy will be considered plus the suggestion of some form of community wood to produce sustainable fuel. The National Trust continues to seek funding for purchasing the land – were they to be successful, it is expected that the village would need to seek funding for chosen projects. **The Clerk** was asked to arrange a review meeting with the National Trust on Monday 16th May at 7.30pm in the Village Centre.

7. Reach Village Garden Party

The Clerk confirmed that the total approximate cost of the Garden Party, including the food, drink, music and bunting was £1,025. Income from visitor donations was £395 so there was a net cost of £630. Swaffham Prior Parochial Charities very kindly provided £300 towards the event and the Amenity Fund will provide the remaining £330. The raffle was very successful raising £258 for the Amenity Fund. Grateful thanks go to Mandy and Sean Manchett for their generosity. The mugs have sold reasonable well, there are just 35 left.

8. Street Lighting Maintenance Decision

The County Council are in the process of concluding a street lighting Private Finance Initiative (PFI) with Balfour Beatty. This will come into operation on 1st July. The Parish Council decided to get Balfour Beatty to maintain the village-owned street lights and chose the more comprehensive option. **The Clerk** will inform the relevant person at the County Council.

9. Tree Pruning on the Playing Field

A villager has requested that a tree situated on the playing field that overhangs their property be cut back. The Clerk will seek three quotations for getting the work done and will also ask about any further work required on the horse chestnut tree on the Green and the work required to keep the byways clear (see item 5(8)).

10. Planning Applications

There were none for consideration.

11. Information Items

It was agreed that plans to refurbish the two village bus shelters be added to the agenda of the next meeting.

Councillor Brearley raised the question of whether the use of sodium lights within the village should be resisted. This item will be added to the agenda of the next meeting.

The Clerk will write to Swaffham Prior Parochial Charities to thank them for their generous donation to the village Garden Party.

16. Payments

100965	David Parr	Garden Party costs	£678.86
100966	Jo Mules	Garden Party costs	£23.96
100967	Clare Snaith	Garden Party costs	£46.16
100968	Helen Oliver	Garden Party costs	£179.86
100969	Karen Carpenter	Garden Party costs	£30.00
100970	CR Contracting	Mowing April	£173.00
100971	Playsafety	Playground Inspection	£86.40
100972	D. Blocksage	Cemetery Mowing April	£134.00

A Message from your District Councillor

Congratulations go to Allen Alderson who has been re-elected as the District Councillor for the Swaffhams ward which includes Reach.



May I first of all thank you for your support in the election. I pledge to continue working on behalf of all the residents in our ward. Now is the time to look to the future.

The Localism Bill presently passing through parliament will devolve more powers to parish councils enabling them to more fully participate in decisions which affect them. There is a need for more affordable housing in our communities thus enabling future generations who so wish to continue living within their area. But this must be at a scale and design that enhances the area. We require better access to leisure facilities particularly for younger residents. This includes pressing for better local transport links. In framing these links there needs to be a recognition that many of our residents tend to associate more closely with Newmarket than Ely.

We are lucky to be living in such a lovely area. Let us work together to make it even better.

Allen Alderson

Answers to Susie's Quiz:

TEMREITOE = Meteorite

TOPOCUS = Octopus

GWB IEELH = Big Wheel

WSGNI ABTOS = Swing Boats

The picture was taken at the bottom of the "Reach Village" sign

The answer to the wives, sacks, cats, kittens question is 1 as you are the only person going to St Ives - they must be coming back if you crossed their path!

Welcome to Eleanor, our new Vicar

The Institution (by the Bishop of Huntingdon) and the Induction (by the Archdeacon of Cambridge) of the Reverend Dr. Eleanor Williams took place at St. Mary's Church, Burwell on Wednesday 13th April at 7.30pm in front of a large congregation.

The Processional hymn was 'Come down, O Love divine', then the Bishop greeted the congregation, followed by the Presentation and Declarations, prayers, the Induction and the Installation. Eleanor was then welcomed by the Churchwardens, other Ministers, the Rural Dean, the Lay Chairman and representatives of other Christian denominations and representatives of the local community. There were readings, a sermon, more hymns and prayers. A collection was taken for the New Churches Fund and the service ended with the blessing. The solemnity of this formal service was complemented by the beautiful organ music and the singing of the choir, which made it a joyous occasion. After the service, everyone was invited to attend a buffet to welcome our new vicar informally and thanks must go to all who provided the delicious food and helped with serving the refreshments.

Zenida McDonald

Pastoral Letter from Revd Eleanor Williams

It's been a very full and exciting few weeks since starting as Vicar of Burwell with Reach. I am so grateful to friends old and new for the welcome I have received. It's been lovely to walk down the street and have so many people come up to me and greet me so warmly with, 'are you the new vicar?' It feels as if I am becoming part of a welcoming community, both the churches and the wider village communities of Burwell and Reach. What I would like to do is to tell you a little more about how things are going to work out for the first few months for me and my family and then a little of my hopes at the beginning of this new chapter in my life and in the life of the churches.

As you probably know I am married to Roger, who is the Vicar of Christ the Redeemer Church, Newmarket Road, Cambridge. Roger will be continuing in this role and we are therefore one of only two clergy couples in Ely diocese where wife and husband are vicars of different parishes.

We will be mainly living in the lovely new vicarage in Isaacson Road, which the diocese have purchased, but we will not be able to move in fully until some minor alterations have been completed. Our two sons, Tom (16) and Jack (nearly 14) will continue to attend school in Cambridge. We are really excited about the possibilities opened up by our ministries in two very different contexts and look forward to working out the practicalities, though it might be a little bit messy during these first few months!

I have spent some time already finding out about the villages and all that has been going on in both churches and in the village communities. What I hope to do in the next few weeks and months is to spend time listening to what has gone before and to talk with as many of you as possible, so that we can discern together where God is leading us for this next phase of ministry. As I begin my ministry here with you, an image that has come to mind and which I am continuing to ponder, is that of a conductor, coming in to lead an orchestra which is well established, with lots going on, very active, all instruments represented, involving more people in different roles than I have ever seen in any church I have been part of. A significant part of my role is going to be about seeking to have an overall perspective, a big picture and work with each person, drawing out each person's gifts, so that together we are able to play the music God calls us to.

Eleanor Williams

Church News

Thank you to everybody who organised and supported the very successful fund raising events over the last few months – the wine tasting, the plant sale and the book stall at Reach Fair. These events between them raised around £1,000 for church funds, which is fantastic. Your continuing support of the local church helps to ensure that it is always there, not just for regular Sunday services but also for special village events like weddings.

The news on the repair front is rather mixed. You may recall that in the Spring we had a rather alarming leak in the church roof that we feared might be a significant and expensive problem. When a contractor was called to look at it, he discovered that some tiles and flashing had been dislodged, presumably in the winter snow and subsequent high winds. He has replaced them and hopes it will do the trick at minimal cost. Of course, we haven't had any significant rain since the repair was carried out, so watch this space!

**Gold Award Winner at the
Community Magazine Awards 2010**

That was the good news, but the last routine inspection by the church architect revealed the need for some fairly major repairs to the stonework of the walls. We are still getting quotes for this work, but the cost it is likely to be several thousand pounds. Reach church does have a legacy fund, which can be used to pay for such things, but additional help may be required, depending on the final cost.

Pat Chalmers, Churchwarden

CentrePeace

CentrePeace continues to come to Reach on the second Wednesday of every month from 2.00pm – 4.00pm. We bring some different books on every occasion, so come and stock up on your holiday reading! Prices are 20p or less for children's books and £1 for paperbacks.



CentrePeace in The Causeway, Burwell has recently started to offer some display space to local people looking for an outlet for crafts etc. The idea is to help local crafts people and also hopefully draw more customers into the shop.

The glass display cabinet we use is about 1ft square and has 4 glass shelves, so is suitable for small items like jewellery, handmade cards etc. It's situated at the side of the window so can be seen from outside the shop as well as from inside. We suggest that each person's work is displayed for a period of about two months before we change to something different – although you can come back later if you wish! There is no specific fee, but if you'd like to make a donation out of any profits you make, we'd be very grateful. If you are interested in taking up this offer, please call Pat Chalmers on 01638 742006

Pat Chalmers

Church Services at Burwell and Reach

Date	St Mary's Burwell	St Etheldreda and the Holy Trinity Reach
JUNE		
Sat 4 th		3.00pm Marriage of Gavin Jackson and Hannah Newman
Sun 5 th Easter 7	8.00am Holy Communion 9.30am Parish Communion	
Wed 8 th	9.00am Informal Prayers 10.00am Holy Communion	
Thurs 9 th	10.00am Toddler Service	
Sun 12 th	9.25am Junior Church 9.30am Parish Communion	8.00am Holy Communion
Sun 12 th Sunday@7 for Pentecost	Venue to be confirmed	
Wed 15 th	9.00am Informal Prayers 10.00am Holy Communion	2.00-4.00pm CentrePeace
Sun 19 th Trinity Sunday	8.00am Holy Communion 9.25am Junior Church 9.30am Family Service	
Wed 22 nd	9.00am Informal Prayers	
Sunday 26 th Trinity 2	8.00am Holy Communion 9.25am Junior Church 9.30am Parish Communion 4.00pm Messy Church	
Wed 29 th	9.00am Informal Prayers 10.00am Holy Communion with MU	
JULY		
Sunday 3 rd Trinity 3	8.00am Holy Communion 9.30am Family Service	
Wed 6 th	9.00am Informal Prayers 10.00am Holy Communion	
Thurs 7 th	10.00am Toddler Service	
Sunday 10 th Trinity 4	9.25am Junior Church 9.30am Parish Communion	8.00am Holy Communion 7.00pm Sunday@7 Informal Contemporary Service
Wed 13	9.00am Informal Prayers 10.00am Holy Communion	2.00-4.00pm CentrePeace
Sunday 17 th	8.00am Holy Communion 9.25am Junior Church 9.30am Family Service	
Wed 20 th	9.00am Informal Prayers	
Sunday 24 th Trinity 6	8.00am Holy Communion 9.25am Junior Church 9.30am Parish Communion	
Wed 27 th	9.00am Informal Prayers 10.00am Holy Communion with MU	
Sunday 31 st Trinity 7		9.30 Parish Communion

Bus Timetable

BUS SERVICE

Reach is served by the 10/10A bus service, provided by Stagecoach.

The difference between the 10 and 10A services is that the 10 travels via Valley Way in Newmarket whilst the 10A uses Noel Murless Drive.

A summary of all buses serving Reach and/or Swaffham Prior Monday to Saturday is shown below.

Please note that there is no bus service at all on Sundays.

Newmarket - Burwell - Reach - Bottisham - Cambridge															
Service No:	10	10	10	10	10	10	10	10	10	10	10	10	10	10	10
	M-F	M-F	Sat	M-F	Sat										
Newmarket (Guineas Station)				0704	0719	0814	0914	1014	1114	1214	1314	1414	1514	1614	1714
Burwell (Toyse Lane)	0630	0700	0715	0730	0745	0840	0940	1040	1140	1240	1340	1440	1540	1640	1740
Reach	0638	0708	0723			0848		1048		1248		1448	1548	1648	1748
Swaffham Prior	0644	0714	0729	0741	0756	0854	0951	1054	1151	1254	1351	1454	1554	1654	1754
Cambridge (Drummer Street)	0727	0807	0812	0837	0842	0937	1037	1137	1237	1337	1437	1537	1637	1737	1837

Cambridge - Bottisham - Reach - Burwell - Newmarket																
Service No:	10	10A	10	10	10	10	10	10	10	10	10	10	10	10	10	
	M-F											M-F	Sat	M-F	Sat	
Cambridge (Drummer Street)	0655	0755	0825	0925	1025	1125	1225	1325	1425	1525	1635	1645	1735	1745	1845	
Swaffham Prior	0729	0829	0902	0959	1102	1159	1302	1359	1502	1559	1722	1722	1819	1819	1919	
Reach	0732	0832		1002		1202		1402		1602				1822	1822	1922
Burwell (Toyse Lane)	0742	0842	0912	1012	1112	1212	1312	1412	1512	1612	1732	1732	1832	1832	1932	
Newmarket (Guineas Station)	0810	0910	0940	1040	1140	1240	1340	1440	1540	1640	1800	1800				

A full timetable can be downloaded from www.reach-village.co.uk/bus_service.html

Diary Dates

JUNE	Event	Location	Time
Wed 1	Parish Council Meeting	Village Centre	7.30pm
Thurs 2	Author Neil Ferguson	St Peter's Church, Ely	7.00pm for 7.30pm
Wed 8	CentrePeace	St Etheldreda's	2.00pm to 4.00pm
Wed 8 – Sat 11	Gilbert & Sullivan's The Sorcerer	Downing Farm, Station Road, Swaffham Bulbeck	7.30pm Matinee Sat
Thurs 9	Devil's Dyke Morris Men	Dyke's End Pub	7.45pm
Thurs 9	Recycling Day		
Wed 15	Village Centre Committee Meeting	Village Centre	8.00pm
Tues 21	Mobile Library	Village Green	2.15pm
Thurs 23	Recycling Day		
24 - 26	Mid Summer Festival Swaffham Prior	Various. See Page 23	Various
Sun 26	Pub Quiz	Dyke's End	7.30pm
Thurs 30	Gail Stuart, Life with My Father Eric Morecombe	Gardiner Memorial Hall, Burwell	7.15pm for 7.30pm
JULY			
Sat 2 and Sun 3	Cambridge Open Studios	Various	11am – 6pm
Wed 6	Parish Council Meeting	Village Centre	7.30pm
Thurs 7	Recycling Day		
Sat 9	The Tastes of Wine	Village Centre	7.30pm
Sat 9 and Sun 10	Cambridge Open Studios	Various	11am – 6pm
Wed 13	CentrePeace	St Etheldreda's	2.00pm to 4.00pm
Sat 16	Church BBQ	Village Green	6.00pm
Sat 16 & Sun 17	Cambridge Open Studios	Various	11am – 6pm
Tues 19	Mobile Library	Village Green	2.15pm
Wed 20	Village Centre Committee Meeting	Village Centre	8.00pm
Thurs 21	Recycling Day		
Sat 23 and Sun 24	Cambridge Open Studios	Various	11am – 6pm
Sun 31	Pub Quiz	Village Centre	7.30pm

Wednesdays 7.30pm onwards **Bellringing at Swaffham Bulbeck** - new recruits are welcome

The **Mobile Library** will now visit Reach on the third Tuesday of the month only

Pilates - if you would like more information about the class
contact Ros Mulvany on 01353 720094 or Helen Oliver on 742484 or helenoliver01@btinternet.com

Contact Information

Parish Council			
	Chairman	Ross Clark	743725
	Vice Chairman	Michael Aves	742800
	Councillor	Malcolm Brearley	mjbrearley@btinternet.com
	Councillor	Rita Dunnett	742943
	Councillor	Hilary Fielding	741853
	Councillor	Joyce Harrison	742405
	Councillor	David Thomas	742676
	Clerk	David Parr	744081
	Play Spaces Officer	Rita Dunnett	742943
	Rights of Way Officer	Hilary Fielding	741853
	County Councillor	David Brown	743283
	District Councillor	Allen Alderson	741744
Village Centre			
	Chairman	Andrew Towers	742484
	Finance	Grahame Radford	742814
	Bookings	Joyce Harrison	742405
	Marquee Bookings	Andrew Hall	743737
Amenity Fund Committee			
	Chairman	Ross Clark	743725
	Committee Member	Rita Dunnett	742943
	Committee Member	John Holmwood	742969
	Committee Member	Claire Halpin-McDonald	743330
	Committee Member	Andrew Towers	742484
Church			
	Hon Assistant Priest	Reverend David Bush	741839
	Reader in Training	Frances Leadon	741770
	Priest in Retirement	Reverend David King	742924
	Parochial Church Council Member	Pam King	742924
	Churchwarden at Burwell/Reach	Pat Chalmers	742006
Emergencies			
	Electricity (Eastern Electric)		0800 783 8838
	Police (Emergency)		999
	Police (Non-emergency)		0345 456 4564
	Water (Anglian Water)		08457 145145
Doctors - Burwell			
	Appointments and Emergencies		741234
	Community Nurses		742382
	Doctors	Dr Anne Schneerson, Dr Andrew Wills, Dr Alex Manning, Dr Anthony Parry, Dr Maureen Birch	
	Surgery Hours	Mon 8.30am to 8.00pm, Tues to Fri 8.30am to 6.00pm	